

Anti-Phospho-DAPK2-Ser318 antibody (284-333 aa) (STJ91302)

STJ91302

GENERAL INFORMATION

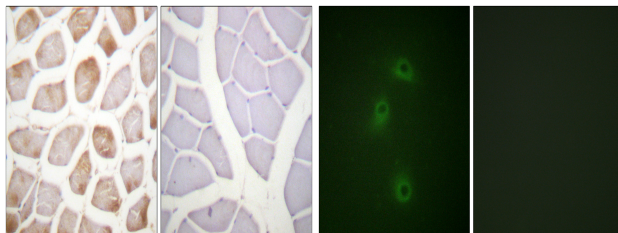
Product Type	Primary antibodies
Short Description	Rabbit polyclonal antibody anti-Phospho-Death-associated protein kinase 2-Ser318 (284-333 aa) is suitable for use in Immunohistochemistry, Immunofluorescence and ELISA research applications.
Applications	IHC/IF/ELISA
Host/Source	Rabbit
Reactivity	Human/Mouse/Rat

PRODUCT PROPERTIES

Clonality	Polyclonal
Clone ID	
Concentration	1 mg/mL
Conjugation	Unconjugated
Purification	The antibody was affinity-purified from rabbit antiserum by affinity-chromatography using epitope-specific immunogen.
Dilution	IHC 1:100-1:300
Range	IF 1:200-1:1000 ELISA 1:5000
Formulation	Liquid in PBS containing 50% Glycerol, 0.5% BSA and 0.02% Sodium Azide.
Isotype	IgG
Storage Instruction	Store at -20°C for up to 1 year from the date of receipt, and avoid repeat freeze-thaw cycles.

TARGET INFORMATION

Gene ID	23604
Gene Symbol	DAPK2
Uniprot ID	DAPK2_HUMAN
Immunogen	The antiserum was produced against synthesized peptide derived from the human DAPK2 around the phosphorylation site of Ser318 at the amino acid range 284-333
Immunogen Region	284-333 aa
Specificity	Phospho-DAPK2 (S318) Polyclonal Antibody detects endogenous levels of DAPK2 protein only when phosphorylated at S318.
Immunogen Sequence	



Immunohistochemistry analysis of paraffin-embedded human skeletal muscle, using DAPK2 (Phospho-Ser318) Antibody. The picture on the right is blocked with the phospho peptide.

Immunofluorescence analysis of COS7 cells, using DAPK2 (Phospho-Ser318) Antibody. The picture on the right is blocked with the phospho peptide.

This product is suitable for in-vitro studies under the RESEARCH USE ONLY [RUO] licence. This product must not be used as for diagnostic or other medical purposes.
St John's Laboratory Ltd, Knowledge Dock Business Centre, University Way, London, E16 2RD | Tel: 0208 223 3081