

## Anti-Phospho-TP53BP1-Ser25 antibody (10-59 aa) (STJ91300)

STJ91300

### GENERAL INFORMATION

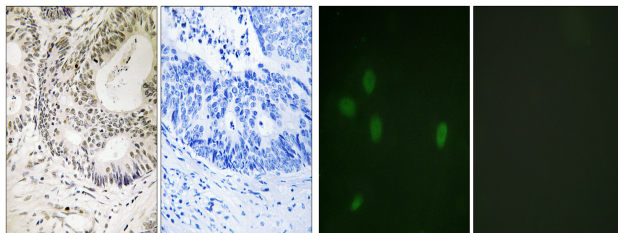
<b>Product Type</b>	Primary antibodies
<b>Short Description</b>	Rabbit polyclonal antibody anti-Phospho-TP53-binding protein 1-Ser25 (10-59 aa) is suitable for use in Immunohistochemistry, Immunofluorescence and ELISA research applications.
<b>Applications</b>	IHC/IF/ELISA
<b>Host/Source</b>	Rabbit
<b>Reactivity</b>	Human/Mouse/Rat

### PRODUCT PROPERTIES

<b>Clonality</b>	Polyclonal
<b>Clone ID</b>	
<b>Concentration</b>	1 mg/mL
<b>Conjugation</b>	Unconjugated
<b>Purification</b>	The antibody was affinity-purified from rabbit antiserum by affinity-chromatography using epitope-specific immunogen.
<b>Dilution Range</b>	IHC 1:100-1:300 IF 1:200-1:1000 ELISA 1:10000
<b>Formulation</b>	Liquid in PBS containing 50% Glycerol, 0.5% BSA and 0.02% Sodium Azide.
<b>Isotype</b>	IgG
<b>Storage Instruction</b>	Store at -20°C for up to 1 year from the date of receipt, and avoid repeat freeze-thaw cycles.

### TARGET INFORMATION

<b>Gene ID</b>	7158
<b>Gene Symbol</b>	TP53BP1
<b>Uniprot ID</b>	TP53B_HUMAN
<b>Immunogen</b>	The antiserum was produced against synthesized peptide derived from the human 53BP1 around the phosphorylation site of Ser25 at the amino acid range 10-59
<b>Immunogen Region</b>	10-59 aa
<b>Specificity</b>	Phospho-53BP1 (S25) Polyclonal Antibody detects endogenous levels of 53BP1 protein only when phosphorylated at S25.
<b>Immunogen Sequence</b>	



Immunohistochemistry analysis of paraffin-embedded human colon carcinoma, using 53BP1 (Phospho-Ser25) Antibody. The picture on the right is blocked with the phospho peptide.

Immunofluorescence analysis of NIH/3T3 cells, using 53BP1 (Phospho-Ser25) Antibody. The picture on the right is blocked with the phospho peptide.