

Anti-Phospho-RPS6KA5-Ser360 antibody (331-380 aa) (STJ91293)

STJ91293

GENERAL INFORMATION

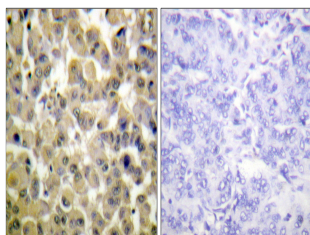
Product Type	Primary antibodies
Short Description	Rabbit polyclonal antibody anti-Phospho-Ribosomal protein S6 kinase alpha-5-Ser360 (331-380 aa) is suitable for use in Immunohistochemistry, Immunofluorescence and ELISA research applications.
Applications	IHC/IF/ELISA
Host/Source	Rabbit
Reactivity	Human/Mouse

PRODUCT PROPERTIES

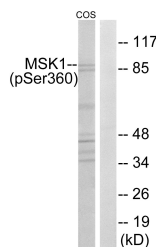
Clonality	Polyclonal
Clone ID	
Concentration	1 mg/mL
Conjugation	Unconjugated
Purification	The antibody was affinity-purified from rabbit antiserum by affinity-chromatography using epitope-specific immunogen.
Dilution	IHC 1:100-1:300
Range	IF 1:200-1:1000 ELISA 1:10000
Formulation	Liquid in PBS containing 50% Glycerol, 0.5% BSA and 0.02% Sodium Azide.
Isotype	IgG
Storage Instruction	Store at -20°C for up to 1 year from the date of receipt, and avoid repeat freeze-thaw cycles.

TARGET INFORMATION

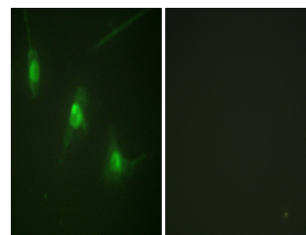
Gene ID	9252
Gene Symbol	RPS6KA5
Uniprot ID	KS6A5_HUMAN
Immunogen	The antiserum was produced against synthesized peptide derived from the human MSK1 around the phosphorylation site of Ser360 at the amino acid range 331-380
Immunogen Region	331-380 aa
Specificity	Phospho-MSK1 (S360) Polyclonal Antibody detects endogenous levels of MSK1 protein only when phosphorylated at S360.
Immunogen Sequence	



Immunohistochemistry analysis of paraffin-embedded human breast carcinoma, using MSK1 (Phospho-Ser360) Antibody. The picture on the right is blocked with the phospho peptide.



Western blot analysis of MSK1 (Phospho-Ser360) Antibody. The lane on the right is blocked with the MSK1 (Phospho-Ser360) peptide.



Immunofluorescence analysis of NIH/3T3 cells, using MSK1 (Phospho-Ser360) Antibody. The picture on the right is blocked with the phospho peptide.