

Anti-Phospho-PPP1R12A-Thr696 antibody (661-710 aa) (STJ91291)

STJ91291

GENERAL INFORMATION

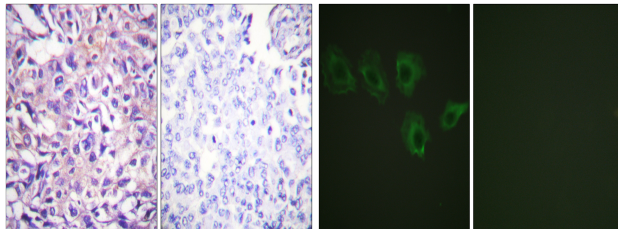
Product Type	Primary antibodies
Short Description	Rabbit polyclonal antibody anti-Phospho-Protein phosphatase 1 regulatory subunit 12A-Thr696 (661-710 aa) is suitable for use in Western Blot, Immunohistochemistry, Immunofluorescence and ELISA research applications.
Applications	WB/IHC/IF/ELISA
Host/Source	Rabbit
Reactivity	Human/Mouse/Rat

PRODUCT PROPERTIES

Clonality	Polyclonal
Clone ID	
Concentration	1 mg/mL
Conjugation	Unconjugated
Purification	The antibody was affinity-purified from rabbit antiserum by affinity-chromatography using epitope-specific immunogen.
Dilution	WB 1:500-2000
Range	IHC 1:100-1:300 IF 1:200-1:1000 ELISA 1:10000
Formulation	Liquid in PBS containing 50% Glycerol, 0.5% BSA and 0.02% Sodium Azide.
Isotype	IgG
Storage Instruction	Store at -20°C for up to 1 year from the date of receipt, and avoid repeat freeze-thaw cycles.

TARGET INFORMATION

Gene ID	4659
Gene Symbol	PPP1R12A
Uniprot ID	MYPT1_HUMAN
Immunogen	The antiserum was produced against synthesized peptide derived from the human MYPT1 around the phosphorylation site of Thr696 at the amino acid range 661-710
Immunogen Region	661-710 aa
Specificity	Phospho-MYPT1 (T696) Polyclonal Antibody detects endogenous levels of MYPT1 protein only when phosphorylated at T696.
Immunogen Sequence	



Immunohistochemistry analysis of paraffin-embedded human breast carcinoma, using MYPT1 (Phospho-Thr696) Antibody. The picture on the right is blocked with the phospho peptide.

Immunofluorescence analysis of A549 cells, using MYPT1 (Phospho-Thr696) Antibody. The picture on the right is blocked with the phospho peptide.

This product is suitable for in-vitro studies under the RESEARCH USE ONLY [RUO] licence. This product must not be used as for diagnostic or other medical purposes.
St John's Laboratory Ltd, Knowledge Dock Business Centre, University Way, London, E16 2RD | Tel: 0208 223 3081