

Anti-Phospho-HSPB6-Ser16 antibody (5-54 aa) (STJ91290)

STJ91290

GENERAL INFORMATION

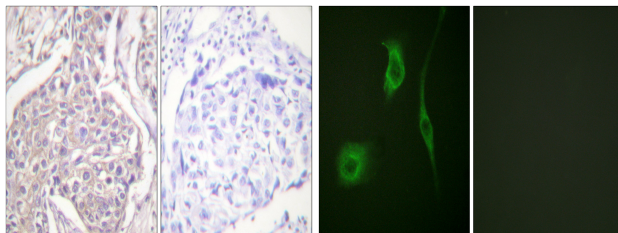
Product Type	Primary antibodies
Short Description	Rabbit polyclonal antibody anti-Phospho-Heat shock protein beta-6-Ser16 (5-54 aa) is suitable for use in Immunohistochemistry, Immunofluorescence and ELISA research applications.
Applications	IHC/IF/ELISA
Host/Source	Rabbit
Reactivity	Human/Mouse/Rat

PRODUCT PROPERTIES

Clonality	Polyclonal
Clone ID	
Concentration	1 mg/mL
Conjugation	Unconjugated
Purification	The antibody was affinity-purified from rabbit antiserum by affinity-chromatography using epitope-specific immunogen.
Dilution Range	IHC 1:100-1:300 IF 1:200-1:1000 ELISA 1:5000
Formulation	Liquid in PBS containing 50% Glycerol, 0.5% BSA and 0.02% Sodium Azide.
Isotype	IgG
Storage Instruction	Store at -20°C for up to 1 year from the date of receipt, and avoid repeat freeze-thaw cycles.

TARGET INFORMATION

Gene ID	126393
Gene Symbol	HSPB6
Uniprot ID	HSPB6_HUMAN
Immunogen	The antiserum was produced against synthesized peptide derived from the human HSP20 around the phosphorylation site of Ser16 at the amino acid range 5-54
Immunogen Region	5-54 aa
Specificity	Phospho-HSP20 (S16) Polyclonal Antibody detects endogenous levels of HSP20 protein only when phosphorylated at S16.
Immunogen Sequence	



Immunohistochemistry analysis of paraffin-embedded human breast carcinoma, using HSP20 (Phospho-Ser16) Antibody. The picture on the right is blocked with the phospho peptide.

Immunofluorescence analysis of HeLa cells, using HSP20 (Phospho-Ser16) Antibody. The picture on the right is blocked with the phospho peptide.