

Anti-Phospho-TBC1D4-Thr642 antibody (611-660 aa) (STJ91288)

STJ91288

GENERAL INFORMATION

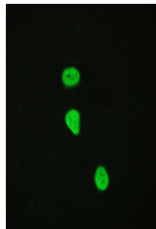
Product Type	Primary antibodies
Short Description	Rabbit polyclonal antibody anti-Phospho-TBC1 domain family member 4-Thr642 (611-660 aa) is suitable for use in Western Blot, Immunohistochemistry, Immunofluorescence and ELISA research applications.
Applications	WB/IHC/IF/ELISA
Host/Source	Rabbit
Reactivity	Human/Mouse

PRODUCT PROPERTIES

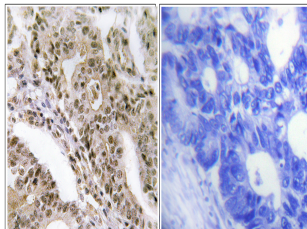
Clonality	Polyclonal
Clone ID	
Concentration	1 mg/mL
Conjugation	Unconjugated
Purification	The antibody was affinity-purified from rabbit antiserum by affinity-chromatography using epitope-specific immunogen.
Dilution	WB 1:500-2000
Range	IHC 1:100-1:300 IF 1:200-1:1000 ELISA 1:5000
Formulation	Liquid in PBS containing 50% Glycerol, 0.5% BSA and 0.02% Sodium Azide.
Isotype	IgG
Storage Instruction	Store at -20°C for up to 1 year from the date of receipt, and avoid repeat freeze-thaw cycles.

TARGET INFORMATION

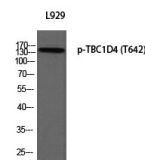
Gene ID	9882
Gene Symbol	TBC1D4
Uniprot ID	TBCD4_HUMAN
Immunogen	The antiserum was produced against synthesized peptide derived from the human AS160 around the phosphorylation site of Thr642 at the amino acid range 611-660
Immunogen Region	611-660 aa
Specificity	Phospho-TBC1D4 (T642) Polyclonal Antibody detects endogenous levels of TBC1D4 protein only when phosphorylated at T642.
Immunogen Sequence	



Immunofluorescence analysis of HeLa cells, using AS160 (Phospho-Thr642) Antibody. The picture on the right is blocked with the phospho peptide.



Immunohistochemistry analysis of paraffin-embedded human lung carcinoma, using AS160 (Phospho-Thr642) Antibody. The picture on the right is blocked with the phospho peptide.



Western blot analysis of L929 using p-TBC1D4 (T642) antibody. Antibody was diluted at 1:2000

This product is suitable for in-vitro studies under the RESEARCH USE ONLY [RUO] licence. This product must not be used as for diagnostic or other medical purposes.
St John's Laboratory Ltd, Knowledge Dock Business Centre, University Way, London, E16 2RD | Tel: 0208 223 3081