

Anti-Phospho-MARCKS-Ser163 antibody (136-185 aa) (STJ91287)

STJ91287

GENERAL INFORMATION

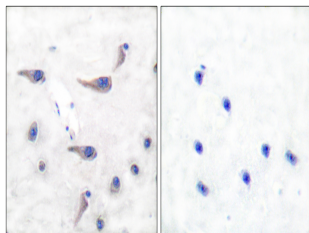
Product Type	Primary antibodies
Short Description	Rabbit polyclonal antibody anti-Phospho-Myristoylated alanine-rich C-kinase substrate-Ser163 (136-185 aa) is suitable for use in Immunohistochemistry, Immunofluorescence and ELISA research applications.
Applications	IHC/IF/ELISA
Host/Source	Rabbit
Reactivity	Human/Mouse/Rat

PRODUCT PROPERTIES

Clonality	Polyclonal
Clone ID	
Concentration	1 mg/mL
Conjugation	Unconjugated
Purification	The antibody was affinity-purified from rabbit antiserum by affinity-chromatography using epitope-specific immunogen.
Dilution	IHC 1:100-1:300
Range	ELISA 1:10000 IF 1:50-200
Formulation	Liquid in PBS containing 50% Glycerol, 0.5% BSA and 0.02% Sodium Azide.
Isotype	IgG
Storage Instruction	Store at -20°C for up to 1 year from the date of receipt, and avoid repeat freeze-thaw cycles.

TARGET INFORMATION

Gene ID	4082
Gene Symbol	MARCKS
Uniprot ID	MARCS_HUMAN
Immunogen	The antiserum was produced against synthesized peptide derived from the human MARCKS around the phosphorylation site of Ser163 at the amino acid range 136-185
Immunogen Region	136-185 aa
Specificity	Phospho-MARCKS (S163) Polyclonal Antibody detects endogenous levels of MARCKS protein only when phosphorylated at S163.
Immunogen Sequence	



Immunohistochemistry analysis of paraffin-embedded human brain, using MARCKS (Phospho-Ser163) Antibody. The picture on the right is blocked with the phospho peptide.

This product is suitable for in-vitro studies under the RESEARCH USE ONLY [RUO] licence. This product must not be used as for diagnostic or other medical purposes.
St John's Laboratory Ltd, Knowledge Dock Business Centre, University Way, London, E16 2RD | Tel: 0208 223 3081