

## Anti-Phospho-GRIA1-Ser849 antibody (816-865 aa) (STJ91286)

STJ91286

### GENERAL INFORMATION

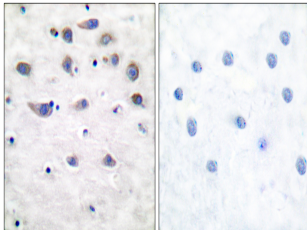
|                          |                                                                                                                                                                                   |
|--------------------------|-----------------------------------------------------------------------------------------------------------------------------------------------------------------------------------|
| <b>Product Type</b>      | Primary antibodies                                                                                                                                                                |
| <b>Short Description</b> | Rabbit polyclonal antibody anti-Phospho-Glutamate receptor 1-Ser849 (816-865 aa) is suitable for use in Immunohistochemistry, Immunofluorescence and ELISA research applications. |
| <b>Applications</b>      | IHC/IF/ELISA                                                                                                                                                                      |
| <b>Host/Source</b>       | Rabbit                                                                                                                                                                            |
| <b>Reactivity</b>        | Human/Mouse/Rat                                                                                                                                                                   |

### PRODUCT PROPERTIES

|                            |                                                                                                                       |
|----------------------------|-----------------------------------------------------------------------------------------------------------------------|
| <b>Clonality</b>           | Polyclonal                                                                                                            |
| <b>Clone ID</b>            |                                                                                                                       |
| <b>Concentration</b>       | 1 mg/mL                                                                                                               |
| <b>Conjugation</b>         | Unconjugated                                                                                                          |
| <b>Purification</b>        | The antibody was affinity-purified from rabbit antiserum by affinity-chromatography using epitope-specific immunogen. |
| <b>Dilution Range</b>      | IHC 1:100-1:300<br>ELISA 1:40000<br>IF 1:50-200                                                                       |
| <b>Formulation</b>         | Liquid in PBS containing 50% Glycerol, 0.5% BSA and 0.02% Sodium Azide.                                               |
| <b>Isotype</b>             | IgG                                                                                                                   |
| <b>Storage Instruction</b> | Store at -20°C for up to 1 year from the date of receipt, and avoid repeat freeze-thaw cycles.                        |

### TARGET INFORMATION

|                           |                                                                                                                                                               |
|---------------------------|---------------------------------------------------------------------------------------------------------------------------------------------------------------|
| <b>Gene ID</b>            | 2890                                                                                                                                                          |
| <b>Gene Symbol</b>        | GRIA1                                                                                                                                                         |
| <b>Uniprot ID</b>         | GRIA1_HUMAN                                                                                                                                                   |
| <b>Immunogen</b>          | The antiserum was produced against synthesized peptide derived from the human GluR1 around the phosphorylation site of Ser849 at the amino acid range 816-865 |
| <b>Immunogen Region</b>   | 816-865 aa                                                                                                                                                    |
| <b>Specificity</b>        | Phospho-GluR-1 (S849) Polyclonal Antibody detects endogenous levels of GluR-1 protein only when phosphorylated at S849.                                       |
| <b>Immunogen Sequence</b> |                                                                                                                                                               |



Immunohistochemistry analysis of paraffin-embedded human brain, using GluR1 (Phospho-Ser849) Antibody. The picture on the right is blocked with the phosphopeptide.

This product is suitable for in-vitro studies under the RESEARCH USE ONLY [RUO] licence. This product must not be used as for diagnostic or other medical purposes.  
St John's Laboratory Ltd, Knowledge Dock Business Centre, University Way, London, E16 2RD | Tel: 0208 223 3081