

Anti-Phospho-PTK2B-Tyr402 antibody (369-418 aa) (STJ91282)

STJ91282

GENERAL INFORMATION

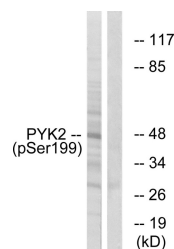
Product Type	Primary antibodies
Short Description	Rabbit polyclonal antibody anti-Phospho-Protein-tyrosine kinase 2-beta-Tyr402 (369-418 aa) is suitable for use in Immunohistochemistry, Immunofluorescence and ELISA research applications.
Applications	IHC/IF/ELISA
Host/Source	Rabbit
Reactivity	Human/Mouse/Rat

PRODUCT PROPERTIES

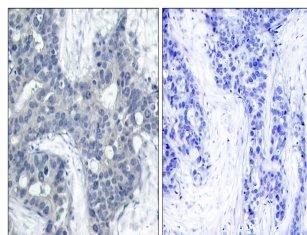
Clonality	Polyclonal
Clone ID	
Concentration	1 mg/mL
Conjugation	Unconjugated
Purification	The antibody was affinity-purified from rabbit antiserum by affinity-chromatography using epitope-specific immunogen.
Dilution Range	IHC 1:100-1:300 ELISA 1:20000 IF 1:50-200
Formulation	Liquid in PBS containing 50% Glycerol, 0.5% BSA and 0.02% Sodium Azide.
Isotype	IgG
Storage Instruction	Store at -20°C for up to 1 year from the date of receipt, and avoid repeat freeze-thaw cycles.

TARGET INFORMATION

Gene ID	2185
Gene Symbol	PTK2B
Uniprot ID	FAK2_HUMAN
Immunogen	The antiserum was produced against synthesized peptide derived from the human PYK2 around the phosphorylation site of Tyr402 at the amino acid range 369-418
Immunogen Region	369-418 aa
Specificity	Phospho-PYK2 (Y402) Polyclonal Antibody detects endogenous levels of PYK2 protein only when phosphorylated at Y402.
Immunogen Sequence	



Western blot analysis of PYK2 (Phospho-Tyr402) Antibody. The lane on the right is blocked with the PYK2 (Phospho-Tyr402) peptide.



Immunohistochemistry analysis of paraffin-embedded human breast carcinoma using PYK2 (Phospho-Tyr402) Antibody. The picture on the right is blocked with the phospho peptide.

This product is suitable for in-vitro studies under the RESEARCH USE ONLY [RUO] licence. This product must not be used as for diagnostic or other medical purposes.
St John's Laboratory Ltd, Knowledge Dock Business Centre, University Way, London, E16 2RD | Tel: 0208 223 3081