

## Anti-Phospho-TIRAP-Tyr86 antibody (52-101 aa) (STJ91272)

STJ91272

### GENERAL INFORMATION

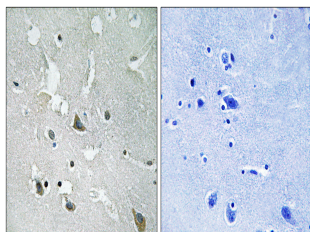
<b>Product Type</b>	Primary antibodies
<b>Short Description</b>	Rabbit polyclonal antibody anti-Phospho-Toll/interleukin-1 receptor domain-containing adapter protein-Tyr86 (52-101 aa) is suitable for use in Western Blot, Immunohistochemistry, Immunofluorescence and ELISA research applications.
<b>Applications</b>	WB/IHC/IF/ELISA
<b>Host/Source</b>	Rabbit
<b>Reactivity</b>	Human/Mouse

### PRODUCT PROPERTIES

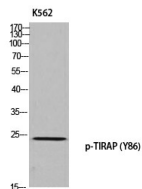
<b>Clonality</b>	Polyclonal
<b>Clone ID</b>	
<b>Concentration</b>	1 mg/mL
<b>Conjugation</b>	Unconjugated
<b>Purification</b>	The antibody was affinity-purified from rabbit antiserum by affinity-chromatography using epitope-specific immunogen.
<b>Dilution</b>	WB 1:500-2000
<b>Range</b>	IHC 1:100-1:300 ELISA 1:5000 IF 1:50-200
<b>Formulation</b>	Liquid in PBS containing 50% Glycerol, 0.5% BSA and 0.02% Sodium Azide.
<b>Isotype</b>	IgG
<b>Storage Instruction</b>	Store at -20°C for up to 1 year from the date of receipt, and avoid repeat freeze-thaw cycles.

### TARGET INFORMATION

<b>Gene ID</b>	114609
<b>Gene Symbol</b>	TIRAP
<b>Uniprot ID</b>	TIRAP_HUMAN
<b>Immunogen</b>	The antiserum was produced against synthesized peptide derived from the human TIRAP around the phosphorylation site of Tyr86 at the amino acid range 52-101
<b>Immunogen Region</b>	52-101 aa
<b>Specificity</b>	Phospho-TIRAP (Y86) Polyclonal Antibody detects endogenous levels of TIRAP protein only when phosphorylated at Y86.
<b>Immunogen Sequence</b>	



Immunohistochemistry analysis of paraffin-embedded human brain, using TIRAP (Phospho-Tyr86) Antibody. The picture on the right is blocked with the phospho peptide.



Western blot analysis of K562 using p-TIRAP (Y86) antibody.

This product is suitable for in-vitro studies under the RESEARCH USE ONLY [RUO] licence. This product must not be used as for diagnostic or other medical purposes.  
St John's Laboratory Ltd, Knowledge Dock Business Centre, University Way, London, E16 2RD | Tel: 0208 223 3081