

## Anti-Phospho-STMN2-Ser73 antibody (STJ91270)

STJ91270

### GENERAL INFORMATION

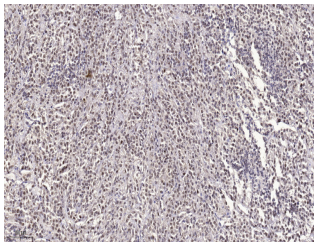
<b>Product Type</b>	Primary antibodies
<b>Short Description</b>	Rabbit polyclonal antibody anti-Phospho-Stathmin-2-Ser73 is suitable for use in Immunohistochemistry, Immunofluorescence and ELISA research applications.
<b>Applications</b>	IHC/IF/ELISA
<b>Host/Source</b>	Rabbit
<b>Reactivity</b>	Human/Mouse/Rat

### PRODUCT PROPERTIES

<b>Clonality</b>	Polyclonal
<b>Clone ID</b>	
<b>Concentration</b>	1 mg/mL
<b>Conjugation</b>	Unconjugated
<b>Purification</b>	The antibody was affinity-purified from rabbit antiserum by affinity-chromatography using epitope-specific immunogen.
<b>Dilution Range</b>	IHC 1:100-1:300 ELISA 1:5000 IF 1:50-200
<b>Formulation</b>	Liquid in PBS containing 50% Glycerol, 0.5% BSA and 0.02% Sodium Azide.
<b>Isotype</b>	IgG
<b>Storage Instruction</b>	Store at -20°C for up to 1 year from the date of receipt, and avoid repeat freeze-thaw cycles.

### TARGET INFORMATION

<b>Gene ID</b>	11075
<b>Gene Symbol</b>	STMN2
<b>Uniprot ID</b>	STMN2_HUMAN
<b>Immunogen</b>	Synthesized phospho-peptide around the phosphorylation site of human SCG10 (phospho Ser73)
<b>Immunogen Region</b>	
<b>Specificity</b>	Phospho-SCG10 (S73) Polyclonal Antibody detects endogenous levels of SCG10 protein only when phosphorylated at S73.
<b>Immunogen Sequence</b>	



Immunohistochemical analysis of paraffin-embedded human small intestinal carcinoma tissue. 1. primary Antibody was diluted at 1:200 (4°C overnight). 2. Sodium citrate pH 6.0 was used for antigen retrieval (>98°C, 20min). 3. Secondary antibody was diluted at 1:200

This product is suitable for in-vitro studies under the RESEARCH USE ONLY [RUO] licence. This product must not be used as for diagnostic or other medical purposes.  
St John's Laboratory Ltd, Knowledge Dock Business Centre, University Way, London, E16 2RD | Tel: 0208 223 3081