

Anti-Phospho-SPHK2-Thr614 antibody (580-629 aa) (STJ91268)

STJ91268

GENERAL INFORMATION

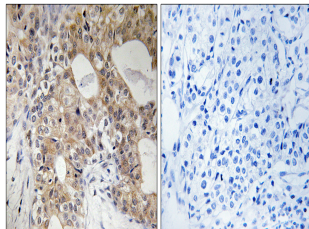
Product Type	Primary antibodies
Short Description	Rabbit polyclonal antibody anti-Phospho-Sphingosine kinase 2-Thr614 (580-629 aa) is suitable for use in Immunohistochemistry, Immunofluorescence, Western Blot and ELISA research applications.
Applications	IHC/IF/WB/ELISA
Host/Source	Rabbit
Reactivity	Human/Mouse/Rat

PRODUCT PROPERTIES

Clonality	Polyclonal
Clone ID	
Concentration	1 mg/mL
Conjugation	Unconjugated
Purification	The antibody was affinity-purified from rabbit antiserum by affinity-chromatography using epitope-specific immunogen.
Dilution Range	WB 1:500-2000 IHC 1:100-1:300 ELISA 1:5000 IF 1:50-200
Formulation	Liquid in PBS containing 50% Glycerol, 0.5% BSA and 0.02% Sodium Azide.
Isotype	IgG
Storage Instruction	Store at -20°C for up to 1 year from the date of receipt, and avoid repeat freeze-thaw cycles.

TARGET INFORMATION

Gene ID	56848
Gene Symbol	SPHK2
Uniprot ID	SPHK2_HUMAN
Immunogen	The antiserum was produced against synthesized peptide derived from the human SPHK2 around the phosphorylation site of Thr614 at the amino acid range 580-629
Immunogen Region	580-629 aa
Specificity	Phospho-SphK2 (T614) Polyclonal Antibody detects endogenous levels of SphK2 protein only when phosphorylated at T614.
Immunogen Sequence	



Immunohistochemistry analysis of paraffin-embedded human breast carcinoma, using SPHK2 (Phospho-Thr614) Antibody. The picture on the right is blocked with the phospho peptide.