

Anti-Phospho-SGO1-Ser14 antibody (1-50 aa) (STJ91267)

STJ91267

GENERAL INFORMATION

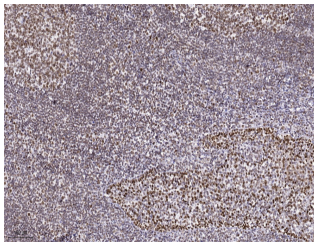
Product Type	Primary antibodies
Short Description	Rabbit polyclonal antibody anti-Phospho-Shugoshin 1-Ser14 (1-50 aa) is suitable for use in Immunohistochemistry, Immunofluorescence and ELISA research applications.
Applications	IHC/IF/ELISA
Host/Source	Rabbit
Reactivity	Human/Rat/Mouse

PRODUCT PROPERTIES

Clonality	Polyclonal
Clone ID	
Concentration	1 mg/mL
Conjugation	Unconjugated
Purification	The antibody was affinity-purified from rabbit antiserum by affinity-chromatography using epitope-specific immunogen.
Dilution Range	IHC 1:100-1:300 ELISA 1:5000 IF 1:50-200
Formulation	Liquid in PBS containing 50% Glycerol, 0.5% BSA and 0.02% Sodium Azide.
Isotype	IgG
Storage Instruction	Store at -20°C for up to 1 year from the date of receipt, and avoid repeat freeze-thaw cycles.

TARGET INFORMATION

Gene ID	151648
Gene Symbol	SGO1
Uniprot ID	SGO1_HUMAN
Immunogen	The antiserum was produced against synthesized peptide derived from the human SGO1 around the phosphorylation site of Ser14 at the amino acid range 1-50
Immunogen Region	1-50 aa
Specificity	Phospho-Sgo1 (S14) Polyclonal Antibody detects endogenous levels of Sgo1 protein only when phosphorylated at S14.
Immunogen Sequence	



Immunohistochemical analysis of paraffin-embedded human tonsil. 1. Antibody was diluted at 1:200 (4A°C overnight). 2. Tris-EDTA, pH9.0 was used for antigen retrieval. 3. Secondary antibody was diluted at 1:200 (room temperature, 45min).

This product is suitable for in-vitro studies under the RESEARCH USE ONLY [RUO] licence. This product must not be used as for diagnostic or other medical purposes.
St John's Laboratory Ltd, Knowledge Dock Business Centre, University Way, London, E16 2RD | Tel: 0208 223 3081