

## Anti-Phospho-CCDC88A-Ser1417 antibody (1383-1432 aa) (STJ91256)

STJ91256

### GENERAL INFORMATION

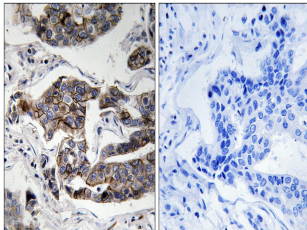
|                          |  |
|--------------------------|--|
| <b>Product Type</b>      | Primary antibodies   |
| <b>Short Description</b> | Rabbit polyclonal antibody anti-Phospho-Girdin-Ser1417 (1383-1432 aa) is suitable for use in Immunohistochemistry, Immunofluorescence and ELISA research applications. |
| <b>Applications</b>      | IHC/IF/ELISA   |
| <b>Host/Source</b>       | Rabbit   |
| <b>Reactivity</b>        | Human/Mouse  |

### PRODUCT PROPERTIES

|                            |   |
|----------------------------|---|
| <b>Clonality</b>           | Polyclonal  |
| <b>Clone ID</b>            |   |
| <b>Concentration</b>       | 1 mg/mL   |
| <b>Conjugation</b>         | Unconjugated  |
| <b>Purification</b>        | The antibody was affinity-purified from rabbit antiserum by affinity-chromatography using epitope-specific immunogen. |
| <b>Dilution Range</b>      | IHC 1:100-1:300<br>ELISA 1:5000<br>IF 1:50-200  |
| <b>Formulation</b>         | Liquid in PBS containing 50% Glycerol, 0.5% BSA and 0.02% Sodium Azide.   |
| <b>Isotype</b>             | IgG   |
| <b>Storage Instruction</b> | Store at -20°C for up to 1 year from the date of receipt, and avoid repeat freeze-thaw cycles.                        |

### TARGET INFORMATION

|                           |   |
|---------------------------|---|
| <b>Gene ID</b>            | 55704   |
| <b>Gene Symbol</b>        | CCDC88A   |
| <b>Uniprot ID</b>         | GRDN_HUMAN  |
| <b>Immunogen</b>          | The antiserum was produced against synthesized peptide derived from the human Girdin around the phosphorylation site of Ser1417 at the amino acid range 1383-1432 |
| <b>Immunogen Region</b>   | 1383-1432 aa  |
| <b>Specificity</b>        | Phospho-Girdin (S1417) Polyclonal Antibody detects endogenous levels of Girdin protein only when phosphorylated at S1417.   |
| <b>Immunogen Sequence</b> |   |



Immunohistochemistry analysis of paraffin-embedded human breast carcinoma, using Girdin (Phospho-Ser1417) Antibody. The picture on the right is blocked with the phospho peptide.