

Anti-Phospho-TCF3-Thr355 antibody (321-370 aa) (STJ91252)

STJ91252

GENERAL INFORMATION

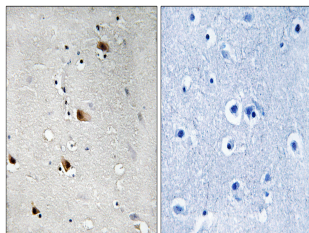
Product Type	Primary antibodies
Short Description	Rabbit polyclonal antibody anti-Phospho-Transcription factor E2-alpha-Thr355 (321-370 aa) is suitable for use in Immunohistochemistry, Immunofluorescence and ELISA research applications.
Applications	IHC/IF/ELISA
Host/Source	Rabbit
Reactivity	Human/Mouse/Rat

PRODUCT PROPERTIES

Clonality	Polyclonal
Clone ID	
Concentration	1 mg/mL
Conjugation	Unconjugated
Purification	The antibody was affinity-purified from rabbit antiserum by affinity-chromatography using epitope-specific immunogen.
Dilution Range	IHC 1:100-1:300 ELISA 1:5000 IF 1:50-200
Formulation	Liquid in PBS containing 50% Glycerol, 0.5% BSA and 0.02% Sodium Azide.
Isotype	IgG
Storage Instruction	Store at -20°C for up to 1 year from the date of receipt, and avoid repeat freeze-thaw cycles.

TARGET INFORMATION

Gene ID	6929
Gene Symbol	TCF3
Uniprot ID	TFE2_HUMAN
Immunogen	The antiserum was produced against synthesized peptide derived from the human E2A around the phosphorylation site of Thr355 at the amino acid range 321-370
Immunogen Region	321-370 aa
Specificity	Phospho-E2A (T355) Polyclonal Antibody detects endogenous levels of E2A protein only when phosphorylated at T355.
Immunogen Sequence	



Immunohistochemistry analysis of paraffin-embedded human brain, using E2A (Phospho-Thr355) Antibody. The picture on the right is blocked with the phospho peptide.