

Anti-Phospho-GPS1-Ser454 antibody (420-469 aa) (STJ91250)

STJ91250

GENERAL INFORMATION

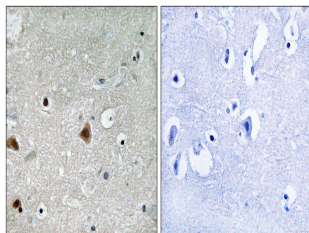
Product Type	Primary antibodies
Short Description	Rabbit polyclonal antibody anti-Phospho-COP9 signalosome complex subunit 1-Ser454 (420-469 aa) is suitable for use in Immunohistochemistry, Immunofluorescence and ELISA research applications.
Applications	IHC/IF/ELISA
Host/Source	Rabbit
Reactivity	Human/Mouse/Rat

PRODUCT PROPERTIES

Clonality	Polyclonal
Clone ID	
Concentration	1 mg/mL
Conjugation	Unconjugated
Purification	The antibody was affinity-purified from rabbit antiserum by affinity-chromatography using epitope-specific immunogen.
Dilution Range	IHC 1:100-1:300 ELISA 1:5000 IF 1:50-200
Formulation	Liquid in PBS containing 50% Glycerol, 0.5% BSA and 0.02% Sodium Azide.
Isotype	IgG
Storage Instruction	Store at -20°C for up to 1 year from the date of receipt, and avoid repeat freeze-thaw cycles.

TARGET INFORMATION

Gene ID	2873
Gene Symbol	GPS1
Uniprot ID	CSN1_HUMAN
Immunogen	The antiserum was produced against synthesized peptide derived from the human COPS1 around the phosphorylation site of Ser454 at the amino acid range 420-469
Immunogen Region	420-469 aa
Specificity	Phospho-CSN1 (S454) Polyclonal Antibody detects endogenous levels of CSN1 protein only when phosphorylated at S454.
Immunogen Sequence	



Immunohistochemistry analysis of paraffin-embedded human brain, using COPS1 (Phospho-Ser454) Antibody. The picture on the right is blocked with the phosphopeptide.