

Anti-Phospho-CLDN5-Tyr217 antibody (169-218 aa) (STJ91249)

STJ91249

GENERAL INFORMATION

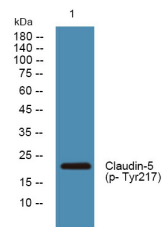
Product Type	Primary antibodies
Short Description	Rabbit polyclonal antibody anti-Phospho-Claudin-5-Tyr217 (169-218 aa) is suitable for use in Immunohistochemistry, Immunofluorescence, Western Blot and ELISA research applications.
Applications	IHC/IF/WB/ELISA
Host/Source	Rabbit
Reactivity	Human/Mouse/Rat

PRODUCT PROPERTIES

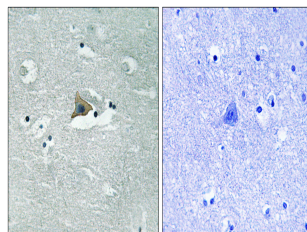
Clonality	Polyclonal
Clone ID	
Concentration	1 mg/mL
Conjugation	Unconjugated
Purification	The antibody was affinity-purified from rabbit antiserum by affinity-chromatography using epitope-specific immunogen.
Dilution Range	WB 1:500-2000 IHC 1:100-1:300 ELISA 1:5000 IF 1:50-200
Formulation	Liquid in PBS containing 50% Glycerol, 0.5% BSA and 0.02% Sodium Azide.
Isotype	IgG
Storage Instruction	Store at -20°C for up to 1 year from the date of receipt, and avoid repeat freeze-thaw cycles.

TARGET INFORMATION

Gene ID	7122
Gene Symbol	CLDN5
Uniprot ID	CLD5_HUMAN
Immunogen	The antiserum was produced against synthesized peptide derived from the human Claudin 5 around the phosphorylation site of Tyr217 at the amino acid range 169-218
Immunogen Region	169-218 aa
Specificity	Phospho-Claudin-5 (Y217) Polyclonal Antibody detects endogenous levels of Claudin-5 protein only when phosphorylated at Y217.
Immunogen Sequence	



Western blot analysis of lysates from HCT116 cells, primary antibody was diluted at 1:1000, 4A°C over night



Immunohistochemistry analysis of paraffin-embedded human brain, using Claudin 5 (Phospho-Tyr217) Antibody. The picture on the right is blocked with the phospho peptide.