

Anti-Phospho-CDC25C-Ser198 antibody (164-213 aa) (STJ91245)

STJ91245

GENERAL INFORMATION

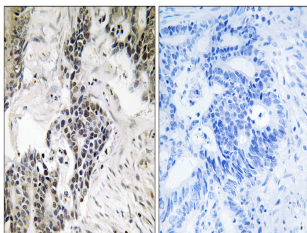
Product Type	Primary antibodies
Short Description	Rabbit polyclonal antibody anti-Phospho-M-phase inducer phosphatase 3-Ser198 (164-213 aa) is suitable for use in Immunohistochemistry, Immunofluorescence and ELISA research applications.
Applications	IHC/IF/ELISA
Host/Source	Rabbit
Reactivity	Human/Rat/Mouse

PRODUCT PROPERTIES

Clonality	Polyclonal
Clone ID	
Concentration	1 mg/mL
Conjugation	Unconjugated
Purification	The antibody was affinity-purified from rabbit antiserum by affinity-chromatography using epitope-specific immunogen.
Dilution Range	IHC 1:100-1:300 ELISA 1:5000 IF 1:50-200
Formulation	Liquid in PBS containing 50% Glycerol, 0.5% BSA and 0.02% Sodium Azide.
Isotype	IgG
Storage Instruction	Store at -20°C for up to 1 year from the date of receipt, and avoid repeat freeze-thaw cycles.

TARGET INFORMATION

Gene ID	995
Gene Symbol	CDC25C
Uniprot ID	MPIP3_HUMAN
Immunogen	The antiserum was produced against synthesized peptide derived from the human CDC25C around the phosphorylation site of Ser198 at the amino acid range 164-213
Immunogen Region	164-213 aa
Specificity	Phospho-Cdc25C (S198) Polyclonal Antibody detects endogenous levels of Cdc25C protein only when phosphorylated at S198.
Immunogen Sequence	



Immunohistochemistry analysis of paraffin-embedded human colon carcinoma, using CDC25C (Phospho-Ser198) Antibody. The picture on the right is blocked with the phospho peptide.