

Anti-Phospho-APLP2-Tyr755 antibody (714-763 aa) (STJ91239)

STJ91239

GENERAL INFORMATION

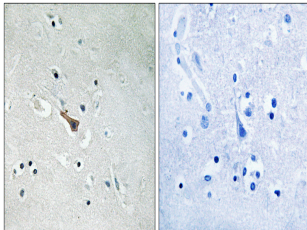
Product Type	Primary antibodies
Short Description	Rabbit polyclonal antibody anti-Phospho-Amyloid beta precursor like protein 2 precursor-like protein 2-Tyr755 (714-763 aa) is suitable for use in Immunohistochemistry, Immunofluorescence and ELISA research applications.
Applications	IHC/IF/ELISA
Host/Source	Rabbit
Reactivity	Human/Mouse/Rat

PRODUCT PROPERTIES

Clonality	Polyclonal
Clone ID	
Concentration	1 mg/mL
Conjugation	Unconjugated
Purification	The antibody was affinity-purified from rabbit antiserum by affinity-chromatography using epitope-specific immunogen.
Dilution Range	IHC 1:100-1:300 ELISA 1:20000 IF 1:50-200
Formulation	Liquid in PBS containing 50% Glycerol, 0.5% BSA and 0.02% Sodium Azide.
Isotype	IgG
Storage Instruction	Store at -20°C for up to 1 year from the date of receipt, and avoid repeat freeze-thaw cycles.

TARGET INFORMATION

Gene ID	334
Gene Symbol	APLP2
Uniprot ID	APLP2_HUMAN
Immunogen	The antiserum was produced against synthesized peptide derived from the human APLP2 around the phosphorylation site of Tyr755 at the amino acid range 714-763
Immunogen Region	714-763 aa
Specificity	Phospho-APLP2 (Y755) Polyclonal Antibody detects endogenous levels of APLP2 protein only when phosphorylated at Y755.
Immunogen Sequence	



Immunohistochemistry analysis of paraffin-embedded human brain, using APLP2 (Phospho-Tyr755) Antibody. The picture on the right is blocked with the phosphopeptide.