

Anti-Phospho-EIF4EBP1-Thr70 antibody (36-85 aa) (STJ91237)

STJ91237

GENERAL INFORMATION

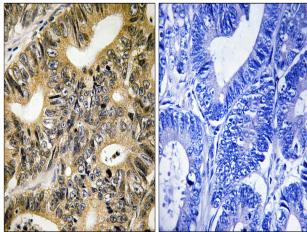
Product Type	Primary antibodies
Short Description	Rabbit polyclonal antibody anti-Phospho-Eukaryotic translation initiation factor 4E-binding protein 1-Thr70 (36-85 aa) is suitable for use in Immunohistochemistry, Immunofluorescence and ELISA research applications.
Applications	IHC/IF/ELISA
Host/Source	Rabbit
Reactivity	Human/Rat/Mouse

PRODUCT PROPERTIES

Clonality	Polyclonal
Clone ID	
Concentration	1 mg/mL
Conjugation	Unconjugated
Purification	The antibody was affinity-purified from rabbit antiserum by affinity-chromatography using epitope-specific immunogen.
Dilution Range	IHC 1:100-1:300 ELISA 1:5000 IF 1:50-200
Formulation	Liquid in PBS containing 50% Glycerol, 0.5% BSA and 0.02% Sodium Azide.
Isotype	IgG
Storage Instruction	Store at -20°C for up to 1 year from the date of receipt, and avoid repeat freeze-thaw cycles.

TARGET INFORMATION

Gene ID	1978
Gene Symbol	EIF4EBP1
Uniprot ID	4EBP1_HUMAN
Immunogen	The antiserum was produced against synthesized peptide derived from the human 4E-BP1 around the phosphorylation site of Thr70 at the amino acid range 36-85
Immunogen Region	36-85 aa
Specificity	Phospho-4E-BP1 (T70) Polyclonal Antibody detects endogenous levels of 4E-BP1 protein only when phosphorylated at T70.
Immunogen Sequence	



Immunohistochemistry analysis of paraffin-embedded human colon carcinoma, using 4E-BP1 (Phospho-Thr70) Antibody. The picture on the right is blocked with the phospho-peptide.