

## Anti-Phospho-ATR-Ser428 antibody (394-443 aa) (STJ91234)

STJ91234

### GENERAL INFORMATION

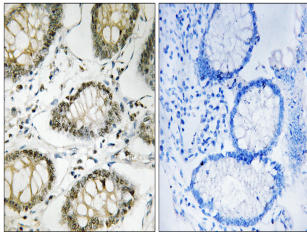
<b>Product Type</b>	Primary antibodies
<b>Short Description</b>	Rabbit polyclonal antibody anti-Phospho-Serine/threonine-protein kinase ATR-Ser428 (394-443 aa) is suitable for use in Immunohistochemistry, Immunofluorescence and ELISA research applications.
<b>Applications</b>	IHC/IF/ELISA
<b>Host/Source</b>	Rabbit
<b>Reactivity</b>	Human/Rat/Mouse

### PRODUCT PROPERTIES

<b>Clonality</b>	Polyclonal
<b>Clone ID</b>	
<b>Concentration</b>	1 mg/mL
<b>Conjugation</b>	Unconjugated
<b>Purification</b>	The antibody was affinity-purified from rabbit antiserum by affinity-chromatography using epitope-specific immunogen.
<b>Dilution</b>	IHC 1:100-1:300
<b>Range</b>	ELISA 1:40000 IF 1:50-200
<b>Formulation</b>	Liquid in PBS containing 50% Glycerol, 0.5% BSA and 0.02% Sodium Azide.
<b>Isotype</b>	IgG
<b>Storage Instruction</b>	Store at -20°C for up to 1 year from the date of receipt, and avoid repeat freeze-thaw cycles.

### TARGET INFORMATION

<b>Gene ID</b>	545
<b>Gene Symbol</b>	ATR
<b>Uniprot ID</b>	ATR_HUMAN
<b>Immunogen</b>	The antiserum was produced against synthesized peptide derived from the human ATR around the phosphorylation site of Ser428 at the amino acid range 394-443
<b>Immunogen Region</b>	394-443 aa
<b>Specificity</b>	Phospho-ATR (S428) Polyclonal Antibody detects endogenous levels of ATR protein only when phosphorylated at S428.
<b>Immunogen Sequence</b>	



Immunohistochemistry analysis of paraffin-embedded human colon carcinoma, using ATR (Phospho-Ser428) Antibody. The picture on the right is blocked with the phospho peptide.

This product is suitable for in-vitro studies under the RESEARCH USE ONLY [RUO] licence. This product must not be used as for diagnostic or other medical purposes.  
St John's Laboratory Ltd, Knowledge Dock Business Centre, University Way, London, E16 2RD | Tel: 0208 223 3081