

Anti-Phospho-CBX5-Ser92 antibody (58-107 aa) (STJ91233)

STJ91233

GENERAL INFORMATION

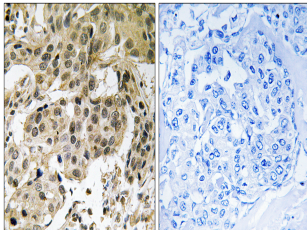
Product Type	Primary antibodies
Short Description	Rabbit polyclonal antibody anti-Phospho-Chromobox protein homolog 5-Ser92 (58-107 aa) is suitable for use in Immunohistochemistry, Immunofluorescence and ELISA research applications.
Applications	IHC/IF/ELISA
Host/Source	Rabbit
Reactivity	Human/Rat/Mouse

PRODUCT PROPERTIES

Clonality	Polyclonal
Clone ID	
Concentration	1 mg/mL
Conjugation	Unconjugated
Purification	The antibody was affinity-purified from rabbit antiserum by affinity-chromatography using epitope-specific immunogen.
Dilution Range	IHC 1:100-1:300 ELISA 1:40000 IF 1:50-200
Formulation	Liquid in PBS containing 50% Glycerol, 0.5% BSA and 0.02% Sodium Azide.
Isotype	IgG
Storage Instruction	Store at -20°C for up to 1 year from the date of receipt, and avoid repeat freeze-thaw cycles.

TARGET INFORMATION

Gene ID	23468
Gene Symbol	CBX5
Uniprot ID	CBX5_HUMAN
Immunogen	The antiserum was produced against synthesized peptide derived from the human HP1 alpha around the phosphorylation site of Ser92 at the amino acid range 58-107
Immunogen Region	58-107 aa
Specificity	Phospho-HP1 Alpha (S92) Polyclonal Antibody detects endogenous levels of HP1 Alpha protein only when phosphorylated at S92.
Immunogen Sequence	



Immunohistochemistry analysis of paraffin-embedded human breast carcinoma, using HP1 alpha (Phospho-Ser92) Antibody. The picture on the right is blocked with the phospho-peptide.