

## Anti-Phospho-Ephrin-B1/2-Tyr329 antibody (295-344 aa) (STJ91226)

STJ91226

### GENERAL INFORMATION

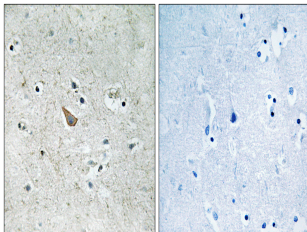
|                          |  |
|--------------------------|--|
| <b>Product Type</b>      | Primary antibodies   |
| <b>Short Description</b> | Rabbit polyclonal antibody anti-Phospho-Ephrin-B1 and Ephrin-B2-Tyr329 (295-344 aa) is suitable for use in Immunohistochemistry, Immunofluorescence and ELISA research applications. |
| <b>Applications</b>      | IHC/IF/ELISA   |
| <b>Host/Source</b>       | Rabbit   |
| <b>Reactivity</b>        | Human/Mouse/Rat  |

### PRODUCT PROPERTIES

|                            |   |
|----------------------------|---|
| <b>Clonality</b>           | Polyclonal  |
| <b>Clone ID</b>            |   |
| <b>Concentration</b>       | 1 mg/mL   |
| <b>Conjugation</b>         | Unconjugated  |
| <b>Purification</b>        | The antibody was affinity-purified from rabbit antiserum by affinity-chromatography using epitope-specific immunogen. |
| <b>Dilution Range</b>      | IHC 1:100-1:300<br>ELISA 1:10000<br>IF 1:50-200   |
| <b>Formulation</b>         | Liquid in PBS containing 50% Glycerol, 0.5% BSA and 0.02% Sodium Azide.   |
| <b>Isotype</b>             | IgG   |
| <b>Storage Instruction</b> | Store at -20°C for up to 1 year from the date of receipt, and avoid repeat freeze-thaw cycles.                        |

### TARGET INFORMATION

|                           |  |
|---------------------------|--|
| <b>Gene ID</b>            | <a href="#">1947</a><br><a href="#">1948</a>   |
| <b>Gene Symbol</b>        | <a href="#">EFNB1</a><br><a href="#">EFNB2</a>   |
| <b>Uniprot ID</b>         | <a href="#">EFNB1_HUMAN</a><br><a href="#">EFNB2_HUMAN</a>   |
| <b>Immunogen</b>          | The antiserum was produced against synthesized peptide derived from the human Ephrin B1/B2 around the phosphorylation site of Tyr329 at the amino acid range 295-344 |
| <b>Immunogen Region</b>   | 295-344 aa   |
| <b>Specificity</b>        | Phospho-Ephrin-B1/2 (Y329) Polyclonal Antibody detects endogenous levels of Ephrin-B1/2 protein only when phosphorylated at Y329.                                    |
| <b>Immunogen Sequence</b> |  |



Immunohistochemistry analysis of paraffin-embedded human brain, using Ephrin B1/B2 (Phospho-Tyr329) Antibody. The picture on the right is blocked with the phospho peptide.