

Anti-Phospho-RAF1-Ser289 antibody (251-300 aa) (STJ91218)

STJ91218

GENERAL INFORMATION

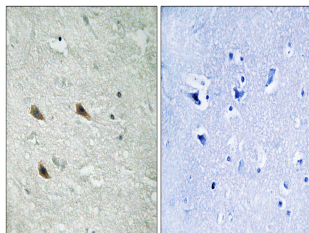
Product Type	Primary antibodies
Short Description	Rabbit polyclonal antibody anti-Phospho-RAF proto-oncogene serine/threonine-protein kinase-Ser289 (251-300 aa) is suitable for use in Immunohistochemistry, Immunofluorescence and ELISA research applications.
Applications	IHC/IF/ELISA
Host/Source	Rabbit
Reactivity	Human/Mouse/Rat

PRODUCT PROPERTIES

Clonality	Polyclonal
Clone ID	
Concentration	1 mg/mL
Conjugation	Unconjugated
Purification	The antibody was affinity-purified from rabbit antiserum by affinity-chromatography using epitope-specific immunogen.
Dilution Range	IHC 1:100-1:300 ELISA 1:5000 IF 1:50-200
Formulation	Liquid in PBS containing 50% Glycerol, 0.5% BSA and 0.02% Sodium Azide.
Isotype	IgG
Storage Instruction	Store at -20°C for up to 1 year from the date of receipt, and avoid repeat freeze-thaw cycles.

TARGET INFORMATION

Gene ID	5894
Gene Symbol	RAF1
Uniprot ID	RAF1_HUMAN
Immunogen	The antiserum was produced against synthesized peptide derived from the human C-RAF around the phosphorylation site of Ser289 at the amino acid range 251-300
Immunogen Region	251-300 aa
Specificity	Phospho-Raf-1 (S289) Polyclonal Antibody detects endogenous levels of Raf-1 protein only when phosphorylated at S289.
Immunogen Sequence	



Immunohistochemistry analysis of paraffin-embedded human brain, using C-RAF (Phospho-Ser289) Antibody. The picture on the right is blocked with the phosphopeptide.