

Anti-Phospho-PAK2-Ser197 antibody (163-212 aa) (STJ91214)

STJ91214

GENERAL INFORMATION

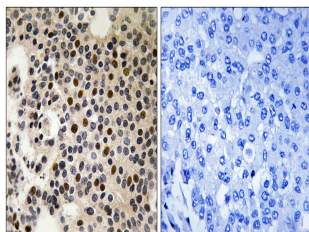
Product Type	Primary antibodies
Short Description	Rabbit polyclonal antibody anti-Phospho-Serine/threonine-protein kinase PAK 2-Ser197 (163-212 aa) is suitable for use in Immunohistochemistry, Immunofluorescence and ELISA research applications.
Applications	IHC/IF/ELISA
Host/Source	Rabbit
Reactivity	Human/Mouse/Rat

PRODUCT PROPERTIES

Clonality	Polyclonal
Clone ID	
Concentration	1 mg/mL
Conjugation	Unconjugated
Purification	The antibody was affinity-purified from rabbit antiserum by affinity-chromatography using epitope-specific immunogen.
Dilution Range	IHC 1:100-1:300 ELISA 1:5000 IF 1:50-200
Formulation	Liquid in PBS containing 50% Glycerol, 0.5% BSA and 0.02% Sodium Azide.
Isotype	IgG
Storage Instruction	Store at -20°C for up to 1 year from the date of receipt, and avoid repeat freeze-thaw cycles.

TARGET INFORMATION

Gene ID	5062
Gene Symbol	PAK2
Uniprot ID	PAK2_HUMAN
Immunogen	The antiserum was produced against synthesized peptide derived from the human PAK2 around the phosphorylation site of Ser197 at the amino acid range 163-212
Immunogen Region	163-212 aa
Specificity	Phospho-PAK Gamma (S197) Polyclonal Antibody detects endogenous levels of PAK Gamma protein only when phosphorylated at S197.
Immunogen Sequence	



Immunohistochemistry analysis of paraffin-embedded human breast carcinoma, using PAK2 (Phospho-Ser197) Antibody. The picture on the right is blocked with the phospho peptide.

This product is suitable for in-vitro studies under the RESEARCH USE ONLY [RUO] licence. This product must not be used as for diagnostic or other medical purposes.
St John's Laboratory Ltd, Knowledge Dock Business Centre, University Way, London, E16 2RD | Tel: 0208 223 3081