

Anti-Phospho-DES-Ser60 antibody (26-75 aa) (STJ91182)

STJ91182

GENERAL INFORMATION

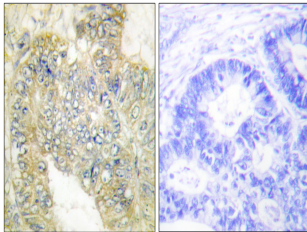
| | |
|--------------------------|--|
| Product Type | Primary antibodies |
| Short Description | Rabbit polyclonal antibody anti-Phospho-Desmin-Ser60 (26-75 aa) is suitable for use in Immunohistochemistry, Immunofluorescence and ELISA research applications. |
| Applications | IHC/IF/ELISA |
| Host/Source | Rabbit |
| Reactivity | Human/Mouse/Rat |

PRODUCT PROPERTIES

| | |
|----------------------------|---|
| Clonality | Polyclonal |
| Clone ID | |
| Concentration | 1 mg/mL |
| Conjugation | Unconjugated |
| Purification | The antibody was affinity-purified from rabbit antiserum by affinity-chromatography using epitope-specific immunogen. |
| Dilution Range | IHC 1:100-1:300 ELISA 1:20000 IF 1:50-200 |
| Formulation | Liquid in PBS containing 50% Glycerol, 0.5% BSA and 0.02% Sodium Azide. |
| Isotype | IgG |
| Storage Instruction | Store at -20°C for up to 1 year from the date of receipt, and avoid repeat freeze-thaw cycles. |

TARGET INFORMATION

| | |
|---------------------------|---|
| Gene ID | 1674 |
| Gene Symbol | DES |
| Uniprot ID | DESM_HUMAN |
| Immunogen | The antiserum was produced against synthesized peptide derived from the human Desmin around the phosphorylation site of Ser60 at the amino acid range 26-75 |
| Immunogen Region | 26-75 aa |
| Specificity | Phospho-Desmin (S60) Polyclonal Antibody detects endogenous levels of Desmin protein only when phosphorylated at S60. |
| Immunogen Sequence | |



Immunohistochemistry analysis of paraffin-embedded human colon carcinoma, using Desmin (Phospho-Ser60) Antibody. The picture on the right is blocked with the phospho peptide.