

Anti-Phospho-Oct-1-Ser385 antibody (361-410 aa) (STJ91181)

STJ91181

GENERAL INFORMATION

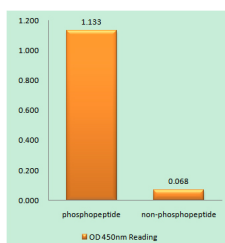
Product Type	Primary antibodies
Short Description	Rabbit polyclonal antibody anti-Phospho-POU domain, class 2, transcription factor 1 and POU domain, class 2, transcription factor 2-Ser385 (361-410 aa) is suitable for use in Immunohistochemistry, Immunofluorescence and ELISA research applications.
Applications	IHC/IF/ELISA
Host/Source	Rabbit
Reactivity	Human/Mouse/Rat

PRODUCT PROPERTIES

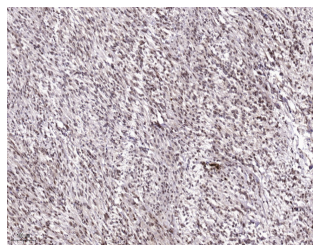
Clonality	Polyclonal
Clone ID	
Concentration	1 mg/mL
Conjugation	Unconjugated
Purification	The antibody was affinity-purified from rabbit antiserum by affinity-chromatography using epitope-specific immunogen.
Dilution	IHC 1:100-1:300
Range	ELISA 1:20000 IF 1:50-200
Formulation	Liquid in PBS containing 50% Glycerol, 0.5% BSA and 0.02% Sodium Azide.
Isotype	IgG
Storage Instruction	Store at -20°C for up to 1 year from the date of receipt, and avoid repeat freeze-thaw cycles.

TARGET INFORMATION

Gene ID	5451 5452
Gene Symbol	POU2F1 POU2F2
Uniprot ID	PO2F1_HUMAN PO2F2_HUMAN
Immunogen	The antiserum was produced against synthesized peptide derived from the human POU2F1/OCT1 around the phosphorylation site of Ser385 at the amino acid range 361-410
Immunogen Region	361-410 aa
Specificity	Phospho-Oct-1 (S385) Polyclonal Antibody detects endogenous levels of 41183 protein only when phosphorylated at S385.
Immunogen Sequence	



Enzyme-Linked Immunosorbent Assay (Phospho-ELISA) for Immunogen Phosphopeptide (Phospho-left) and Non-Phosphopeptide (Phospho-right), using POU2F1/OCT1 (Phospho-Ser385) Antibody



Immunohistochemical analysis of paraffin-embedded human Colon cancer. 1. Antibody was diluted at 1:200 (4A°C overnight). 2. Tris-EDTA, pH9.0 was used for antigen retrieval. 3. Secondary antibody was diluted at 1:200 (room temperature, 45min).