

Anti-Phospho-NR4A1-Ser351 antibody (317-366 aa) (STJ91179)

STJ91179

GENERAL INFORMATION

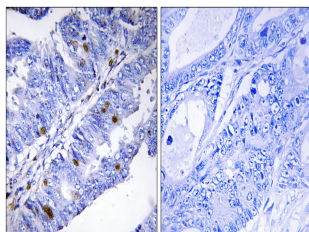
Product Type	Primary antibodies
Short Description	Rabbit polyclonal antibody anti-Phospho-Nuclear receptor subfamily 4immunitygroup A member 1-Ser351 (317-366 aa) is suitable for use in Western Blot, Immunohistochemistry, Immunofluorescence and ELISA research applications.
Applications	WB/IHC/IF/ELISA
Host/Source	Rabbit
Reactivity	Human/Mouse/Rat

PRODUCT PROPERTIES

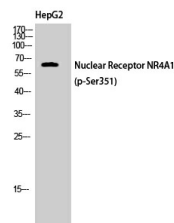
Clonality	Polyclonal
Clone ID	
Concentration	1 mg/mL
Conjugation	Unconjugated
Purification	The antibody was affinity-purified from rabbit antiserum by affinity-chromatography using epitope-specific immunogen.
Dilution	WB 1:500-2000
Range	IHC 1:100-1:300 ELISA 1:40000 IF 1:50-200
Formulation	Liquid in PBS containing 50% Glycerol, 0.5% BSA and 0.02% Sodium Azide.
Isotype	IgG
Storage Instruction	Store at -20°C for up to 1 year from the date of receipt, and avoid repeat freeze-thaw cycles.

TARGET INFORMATION

Gene ID	3164
Gene Symbol	NR4A1
Uniprot ID	NR4A1_HUMAN
Immunogen	The antiserum was produced against synthesized peptide derived from the human Nuclear Receptor NR4A1 around the phosphorylation site of Ser351 at the amino acid range 317-366
Immunogen Region	317-366 aa
Specificity	Phospho-Nur77 (S351) Polyclonal Antibody detects endogenous levels of Nur77 protein only when phosphorylated at S351.
Immunogen Sequence	



Immunohistochemistry analysis of paraffin-embedded human colon carcinoma, using Nuclear Receptor NR4A1 (Phospho-Ser351) Antibody. The picture on the right is blocked with the phospho peptide.



Western blot analysis of HepG2 cells using Phospho-Nur77 (S351) Polyclonal Antibody cells nucleus extracted by Minute TM Cytoplasmic and Nuclear Fractionation kit (SC-003, Inventiotech, MN, USA).

This product is suitable for in-vitro studies under the RESEARCH USE ONLY [RUO] licence. This product must not be used as for diagnostic or other medical purposes.
St John's Laboratory Ltd, Knowledge Dock Business Centre, University Way, London, E16 2RD | Tel: 0208 223 3081