

Anti-Phospho-NCF1-Ser328 antibody (301-350 aa) (STJ91178)

STJ91178

GENERAL INFORMATION

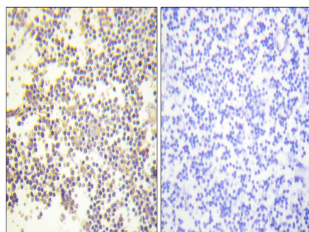
Product Type	Primary antibodies
Short Description	Rabbit polyclonal antibody anti-Phospho-Neutrophil cytosol factor 1-Ser328 (301-350 aa) is suitable for use in Western Blot, Immunohistochemistry, Immunofluorescence and ELISA research applications.
Applications	WB/IHC/IF/ELISA
Host/Source	Rabbit
Reactivity	Human/Mouse/Rat/Cow

PRODUCT PROPERTIES

Clonality	Polyclonal
Clone ID	
Concentration	1 mg/mL
Conjugation	Unconjugated
Purification	The antibody was affinity-purified from rabbit antiserum by affinity-chromatography using epitope-specific immunogen.
Dilution	WB 1:500-2000
Range	IHC 1:100-1:300 ELISA 1:10000 IF 1:50-200
Formulation	Liquid in PBS containing 50% Glycerol, 0.5% BSA and 0.02% Sodium Azide.
Isotype	IgG
Storage Instruction	Store at -20°C for up to 1 year from the date of receipt, and avoid repeat freeze-thaw cycles.

TARGET INFORMATION

Gene ID	653361
Gene Symbol	NCF1
Uniprot ID	NCF1_HUMAN
Immunogen	The antiserum was produced against synthesized peptide derived from the human Neutrophil Cytosol Factor 1 around the phosphorylation site of Ser328 at the amino acid range 301-350
Immunogen Region	301-350 aa
Specificity	Phospho-p47-phox (S328) Polyclonal Antibody detects endogenous levels of p47-phox protein only when phosphorylated at S328.
Immunogen Sequence	



Immunohistochemistry analysis of paraffin-embedded human tonsil using Neutrophil Cytosol Factor 1 (Phospho-Ser328) Antibody. The picture on the right is blocked with the phospho peptide.

This product is suitable for in-vitro studies under the RESEARCH USE ONLY [RUO] licence. This product must not be used as for diagnostic or other medical purposes.
St John's Laboratory Ltd, Knowledge Dock Business Centre, University Way, London, E16 2RD | Tel: 0208 223 3081