

Anti-Phospho-ARK-2/3-Thr236/202 antibody (201-250 aa) (STJ91175)

STJ91175

GENERAL INFORMATION

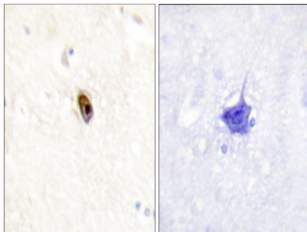
Product Type	Primary antibodies
Short Description	Rabbit polyclonal antibody anti-Phospho-Aurora kinase B and Aurora kinase C-Thr236/202 (201-250 aa) is suitable for use in Immunohistochemistry, Immunofluorescence and ELISA research applications.
Applications	IHC/IF/ELISA
Host/Source	Rabbit
Reactivity	Human/Mouse/Rat

PRODUCT PROPERTIES

Clonality	Polyclonal
Clone ID	
Concentration	1 mg/mL
Conjugation	Unconjugated
Purification	The antibody was affinity-purified from rabbit antiserum by affinity-chromatography using epitope-specific immunogen.
Dilution Range	IHC 1:100-1:300 ELISA 1:10000 IF 1:50-200
Formulation	Liquid in PBS containing 50% Glycerol, 0.5% BSA and 0.02% Sodium Azide.
Isotype	IgG
Storage Instruction	Store at -20°C for up to 1 year from the date of receipt, and avoid repeat freeze-thaw cycles.

TARGET INFORMATION

Gene ID	6795 9212
Gene Symbol	AURKC AURKB
Uniprot ID	AURKC_HUMAN AURKB_HUMAN
Immunogen	The antiserum was produced against synthesized peptide derived from the human AurB/C around the phosphorylation site of Thr236/202 at the amino acid range 201-250
Immunogen Region	201-250 aa
Specificity	Phospho-ARK-2/3 (T236/202) Polyclonal Antibody detects endogenous levels of ARK-2/3 protein only when phosphorylated at T236/202.
Immunogen Sequence	



Immunohistochemistry analysis of paraffin-embedded human brain, using AurB/C (Phospho-Thr236/202) Antibody. The picture on the right is blocked with the phospho peptide.