

Anti-Phospho-DUSP1-Ser359 antibody (318-367 aa) (STJ91170)

STJ91170

GENERAL INFORMATION

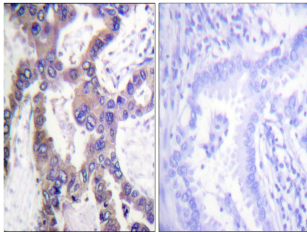
| | |
|--------------------------|---|
| Product Type | Primary antibodies |
| Short Description | Rabbit polyclonal antibody anti-Phospho-Dual specificity protein phosphatase 1-Ser359 (318-367 aa) is suitable for use in Immunohistochemistry, Immunofluorescence and ELISA research applications. |
| Applications | IHC/IF/ELISA |
| Host/Source | Rabbit |
| Reactivity | Human/Rat/Mouse |

PRODUCT PROPERTIES

| | |
|----------------------------|---|
| Clonality | Polyclonal |
| Clone ID | |
| Concentration | 1 mg/mL |
| Conjugation | Unconjugated |
| Purification | The antibody was affinity-purified from rabbit antiserum by affinity-chromatography using epitope-specific immunogen. |
| Dilution Range | IHC 1:100-1:300 ELISA 1:10000 IF 1:50-200 |
| Formulation | Liquid in PBS containing 50% Glycerol, 0.5% BSA and 0.02% Sodium Azide. |
| Isotype | IgG |
| Storage Instruction | Store at -20°C for up to 1 year from the date of receipt, and avoid repeat freeze-thaw cycles. |

TARGET INFORMATION

| | |
|---------------------------|--|
| Gene ID | 1843 |
| Gene Symbol | DUSP1 |
| Uniprot ID | DUS1_HUMAN |
| Immunogen | The antiserum was produced against synthesized peptide derived from the human MKP1 around the phosphorylation site of Ser359 at the amino acid range 318-367 |
| Immunogen Region | 318-367 aa |
| Specificity | Phospho-MKP-1 (S359) Polyclonal Antibody detects endogenous levels of MKP-1 protein only when phosphorylated at S359. |
| Immunogen Sequence | |



Immunohistochemistry analysis of paraffin-embedded human lung carcinoma, using MKP1 (Phospho-Ser359) Antibody. The picture on the right is blocked with the phospho peptide.