

Anti-Phospho-MAD1L1-Ser428 antibody (394-443 aa) (STJ91167)

STJ91167

GENERAL INFORMATION

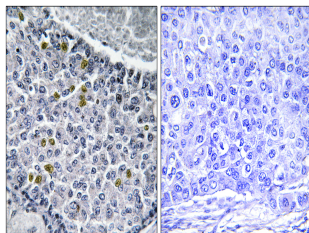
Product Type	Primary antibodies
Short Description	Rabbit polyclonal antibody anti-Phospho-Mitotic spindle assembly checkpoint protein MAD1-Ser428 (394-443 aa) is suitable for use in Immunohistochemistry, Immunofluorescence and ELISA research applications.
Applications	IHC/IF/ELISA
Host/Source	Rabbit
Reactivity	Human/Rat/Mouse

PRODUCT PROPERTIES

Clonality	Polyclonal
Clone ID	
Concentration	1 mg/mL
Conjugation	Unconjugated
Purification	The antibody was affinity-purified from rabbit antiserum by affinity-chromatography using epitope-specific immunogen.
Dilution	IHC 1:100-1:300
Range	ELISA 1:5000 IF 1:50-200
Formulation	Liquid in PBS containing 50% Glycerol, 0.5% BSA and 0.02% Sodium Azide.
Isotype	IgG
Storage Instruction	Store at -20°C for up to 1 year from the date of receipt, and avoid repeat freeze-thaw cycles.

TARGET INFORMATION

Gene ID	8379
Gene Symbol	MAD1L1
Uniprot ID	MD1L1_HUMAN
Immunogen	The antiserum was produced against synthesized peptide derived from the human MAD1 around the phosphorylation site of Ser428 at the amino acid range 394-443
Immunogen Region	394-443 aa
Specificity	Phospho-MAD1 (S428) Polyclonal Antibody detects endogenous levels of MAD1 protein only when phosphorylated at S428.
Immunogen Sequence	



Immunohistochemistry analysis of paraffin-embedded human breast carcinoma, using MAD1 (Phospho-Ser428) Antibody. The picture on the right is blocked with the phospho-peptide.

This product is suitable for in-vitro studies under the RESEARCH USE ONLY [RUO] licence. This product must not be used as for diagnostic or other medical purposes.
St John's Laboratory Ltd, Knowledge Dock Business Centre, University Way, London, E16 2RD | Tel: 0208 223 3081