

## Anti-Phospho-IL1R1-Tyr496 antibody (471-520 aa) (STJ91162)

STJ91162

### GENERAL INFORMATION

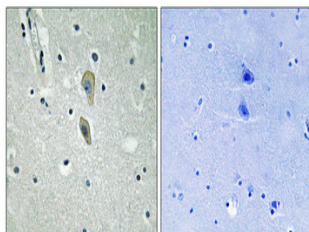
<b>Product Type</b>	Primary antibodies
<b>Short Description</b>	Rabbit polyclonal antibody anti-Phospho-Interleukin-1 receptor type 1-Tyr496 (471-520 aa) is suitable for use in Western Blot, Immunohistochemistry, Immunofluorescence and ELISA research applications.
<b>Applications</b>	WB/IHC/IF/ELISA
<b>Host/Source</b>	Rabbit
<b>Reactivity</b>	Human/Mouse/Rat

### PRODUCT PROPERTIES

<b>Clonality</b>	Polyclonal
<b>Clone ID</b>	
<b>Concentration</b>	1 mg/mL
<b>Conjugation</b>	Unconjugated
<b>Purification</b>	The antibody was affinity-purified from rabbit antiserum by affinity-chromatography using epitope-specific immunogen.
<b>Dilution Range</b>	WB 1:500-1:2000 IHC 1:100-1:300 ELISA 1:10000 IF 1:50-200
<b>Formulation</b>	Liquid in PBS containing 50% Glycerol, 0.5% BSA and 0.02% Sodium Azide.
<b>Isotype</b>	IgG
<b>Storage Instruction</b>	Store at -20°C for up to 1 year from the date of receipt, and avoid repeat freeze-thaw cycles.

### TARGET INFORMATION

<b>Gene ID</b>	3554
<b>Gene Symbol</b>	IL1R1
<b>Uniprot ID</b>	IL1R1_HUMAN
<b>Immunogen</b>	The antiserum was produced against synthesized peptide derived from the human IL-1Ralpha/CD121alpha around the phosphorylation site of Tyr496 at the amino acid range 471-520
<b>Immunogen Region</b>	471-520 aa
<b>Specificity</b>	Phospho-IL-1RI (Y496) Polyclonal Antibody detects endogenous levels of IL-1RI protein only when phosphorylated at Y496.
<b>Immunogen Sequence</b>	



Immunohistochemical analysis of paraffin-embedded Human brain. Antibody was diluted at 1:100 (4A°C overnight). High-pressure and temperature Tris-EDTA, pH8.0 was used for antigen retrieval. Negative control (right) obtained from antibody was pre-absorbed by immunogen peptide.