

Anti-Phospho-CDKN1B-Thr157 antibody (123-172 aa) (STJ91150)

STJ91150

GENERAL INFORMATION

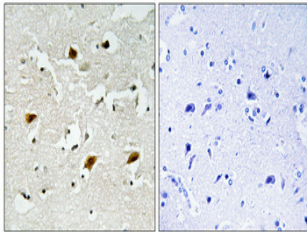
Product Type	Primary antibodies
Short Description	Rabbit polyclonal antibody anti-Phospho-Cyclin-dependent kinase inhibitor 1B-Thr157 (123-172 aa) is suitable for use in Immunohistochemistry, Immunofluorescence and ELISA research applications.
Applications	IHC/IF/ELISA
Host/Source	Rabbit
Reactivity	Human/Rat/Mouse

PRODUCT PROPERTIES

Clonality	Polyclonal
Clone ID	
Concentration	1 mg/mL
Conjugation	Unconjugated
Purification	The antibody was affinity-purified from rabbit antiserum by affinity-chromatography using epitope-specific immunogen.
Dilution Range	IHC 1:100-1:300 ELISA 1:5000 IF 1:50-200
Formulation	Liquid in PBS containing 50% Glycerol, 0.5% BSA and 0.02% Sodium Azide.
Isotype	IgG
Storage Instruction	Store at -20°C for up to 1 year from the date of receipt, and avoid repeat freeze-thaw cycles.

TARGET INFORMATION

Gene ID	1027
Gene Symbol	CDKN1B
Uniprot ID	CDN1B_HUMAN
Immunogen	The antiserum was produced against synthesized peptide derived from the human p27 Kip1 around the phosphorylation site of Thr157 at the amino acid range 123-172
Immunogen Region	123-172 aa
Specificity	Phospho-p27 (T157) Polyclonal Antibody detects endogenous levels of p27 protein only when phosphorylated at T157.
Immunogen Sequence	



Immunohistochemical analysis of paraffin-embedded Human brain. Antibody was diluted at 1:100 (4A°C overnight). High-pressure and temperature Tris-EDTA, pH8.0 was used for antigen retrieval. Negative control (right) obtained from antibody was pre-absorbed by immunogen peptide.