

Anti-Phospho-PRKDC-Ser2056 antibody (2022-2071 aa) (STJ91147)

STJ91147

GENERAL INFORMATION

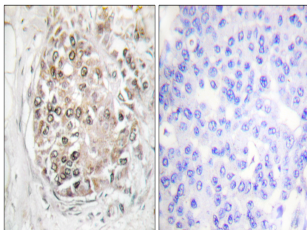
Product Type	Primary antibodies
Short Description	Rabbit polyclonal antibody anti-Phospho-DNA-dependent protein kinase catalytic subunit-Ser2056 (2022-2071 aa) is suitable for use in Western Blot, Immunohistochemistry, Immunofluorescence and ELISA research applications.
Applications	WB/IHC/IF/ELISA
Host/Source	Rabbit
Reactivity	Human/Mouse

PRODUCT PROPERTIES

Clonality	Polyclonal
Clone ID	
Concentration	1 mg/mL
Conjugation	Unconjugated
Purification	The antibody was affinity-purified from rabbit antiserum by affinity-chromatography using epitope-specific immunogen.
Dilution	IHC 1:100-1:300
Range	ELISA 1:20000 WB 1:500-2000 IF 1:50-200
Formulation	Liquid in PBS containing 50% Glycerol, 0.5% BSA and 0.02% Sodium Azide.
Isotype	IgG
Storage Instruction	Store at -20°C for up to 1 year from the date of receipt, and avoid repeat freeze-thaw cycles.

TARGET INFORMATION

Gene ID	5591
Gene Symbol	PRKDC
Uniprot ID	PRKDC_HUMAN
Immunogen	The antiserum was produced against synthesized peptide derived from the human DNA-PK around the phosphorylation site of Ser2056 at the amino acid range 2022-2071
Immunogen Region	2022-2071 aa
Specificity	Phospho-DNA-PKCS (S2056) Polyclonal Antibody detects endogenous levels of DNA-PKCS protein only when phosphorylated at S2056.
Immunogen Sequence	



Immunohistochemistry analysis of paraffin-embedded human breast carcinoma, using DNA-PK (Phospho-Ser2056) Antibody. The picture on the right is blocked with the phospho peptide.