

Anti-Phospho-RBL1-Thr369 antibody (335-384 aa) (STJ91140)

STJ91140

GENERAL INFORMATION

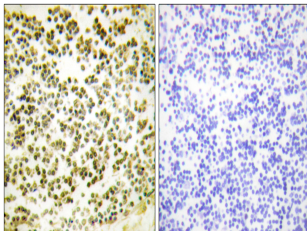
Product Type	Primary antibodies
Short Description	Rabbit polyclonal antibody anti-Phospho-Retinoblastoma-like protein 1-Thr369 (335-384 aa) is suitable for use in Western Blot, Immunohistochemistry, Immunofluorescence and ELISA research applications.
Applications	WB/IHC/IF/ELISA
Host/Source	Rabbit
Reactivity	Human/Mouse

PRODUCT PROPERTIES

Clonality	Polyclonal
Clone ID	
Concentration	1 mg/mL
Conjugation	Unconjugated
Purification	The antibody was affinity-purified from rabbit antiserum by affinity-chromatography using epitope-specific immunogen.
Dilution Range	WB 1:500-2000 IHC 1:100-1:300 ELISA 1:5000 IF 1:50-200
Formulation	Liquid in PBS containing 50% Glycerol, 0.5% BSA and 0.02% Sodium Azide.
Isotype	IgG
Storage Instruction	Store at -20°C for up to 1 year from the date of receipt, and avoid repeat freeze-thaw cycles.

TARGET INFORMATION

Gene ID	5933
Gene Symbol	RBL1
Uniprot ID	RBL1_HUMAN
Immunogen	The antiserum was produced against synthesized peptide derived from the human RBL1 around the phosphorylation site of Thr369 at the amino acid range 335-384
Immunogen Region	335-384 aa
Specificity	Phospho-p107 (T369) Polyclonal Antibody detects endogenous levels of p107 protein only when phosphorylated at T369.
Immunogen Sequence	



Immunohistochemistry analysis of paraffin-embedded human lymph node, using RBL1 (Phospho-Thr369) Antibody. The picture on the right is blocked with the phospho peptide.