

Anti-Phospho-BRAF-Thr599 antibody (571-620 aa) (STJ91139)

STJ91139

GENERAL INFORMATION

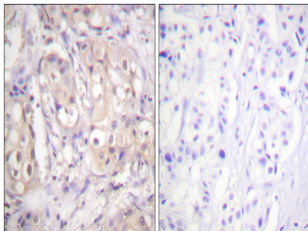
Product Type	Primary antibodies
Short Description	Rabbit polyclonal antibody anti-Phospho-Serine/threonine-protein kinase B-raf-Thr599 (571-620 aa) is suitable for use in Western Blot, Immunohistochemistry, Immunofluorescence and ELISA research applications.
Applications	WB/IHC/IF/ELISA
Host/Source	Rabbit
Reactivity	Human/Mouse/Rat

PRODUCT PROPERTIES

Clonality	Polyclonal
Clone ID	
Concentration	1 mg/mL
Conjugation	Unconjugated
Purification	The antibody was affinity-purified from rabbit antiserum by affinity-chromatography using epitope-specific immunogen.
Dilution Range	WB 1:500-2000 IHC 1:100-1:300 ELISA 1:40000 IF 1:50-200
Formulation	Liquid in PBS containing 50% Glycerol, 0.5% BSA and 0.02% Sodium Azide.
Isotype	IgG
Storage Instruction	Store at -20°C for up to 1 year from the date of receipt, and avoid repeat freeze-thaw cycles.

TARGET INFORMATION

Gene ID	673
Gene Symbol	BRAF
Uniprot ID	BRAF_HUMAN
Immunogen	The antiserum was produced against synthesized peptide derived from the human B-RAF around the phosphorylation site of Thr599 at the amino acid range 571-620
Immunogen Region	571-620 aa
Specificity	Phospho-Raf-B (T599) Polyclonal Antibody detects endogenous levels of Raf-B protein only when phosphorylated at T599.
Immunogen Sequence	



Immunohistochemistry analysis of paraffin-embedded human breast carcinoma, using B-RAF (Phospho-Thr599) Antibody. The picture on the right is blocked with the phospho peptide.