

Anti-Phospho-PPP1CA-Thr320 antibody (281-330 aa) (STJ91134)

STJ91134

GENERAL INFORMATION

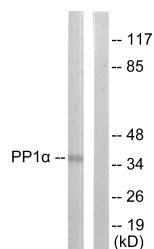
Product Type	Primary antibodies
Short Description	Rabbit polyclonal antibody anti-Phospho-Serine/threonine-protein phosphatase PP1-alpha catalytic subunit-Thr320 (281-330 aa) is suitable for use in Immunohistochemistry, Immunofluorescence and ELISA research applications.
Applications	IHC/IF/ELISA
Host/Source	Rabbit
Reactivity	Human/Mouse/Rat

PRODUCT PROPERTIES

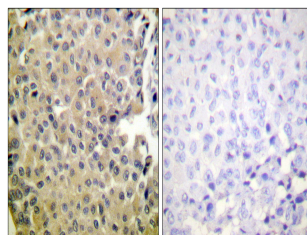
Clonality	Polyclonal
Clone ID	
Concentration	1 mg/mL
Conjugation	Unconjugated
Purification	The antibody was affinity-purified from rabbit antiserum by affinity-chromatography using epitope-specific immunogen.
Dilution	IHC 1:100-1:300
Range	ELISA 1:10000 IF 1:50-200
Formulation	Liquid in PBS containing 50% Glycerol, 0.5% BSA and 0.02% Sodium Azide.
Isotype	IgG
Storage Instruction	Store at -20°C for up to 1 year from the date of receipt, and avoid repeat freeze-thaw cycles.

TARGET INFORMATION

Gene ID	5499
Gene Symbol	PPP1CA
Uniprot ID	PP1A_HUMAN
Immunogen	The antiserum was produced against synthesized peptide derived from the human PP1-alpha around the phosphorylation site of Thr320 at the amino acid range 281-330
Immunogen Region	281-330 aa
Specificity	Phospho-PP1 Alpha (T320) Polyclonal Antibody detects endogenous levels of PP1 Alpha protein only when phosphorylated at T320.
Immunogen Sequence	



Western blot analysis of PP1-alpha (Phospho-Thr320) Antibody. The lane on the right is blocked with the PP1-alpha (Phospho-Thr320) peptide.



Immunohistochemistry analysis of paraffin-embedded human breast carcinoma, using PP1-alpha (Phospho-Thr320) Antibody. The picture on the right is blocked with the phospho peptide.

This product is suitable for in-vitro studies under the RESEARCH USE ONLY [RUO] licence. This product must not be used as for diagnostic or other medical purposes.
St John's Laboratory Ltd, Knowledge Dock Business Centre, University Way, London, E16 2RD | Tel: 0208 223 3081