

Anti-Phospho-TSC2-Thr1462 antibody (1428-1477 aa) (STJ91128)

STJ91128

GENERAL INFORMATION

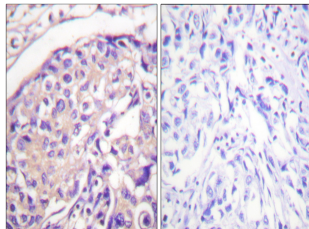
Product Type	Primary antibodies
Short Description	Rabbit polyclonal antibody anti-Phospho-Tuberin-Thr1462 (1428-1477 aa) is suitable for use in Western Blot, Immunohistochemistry, Immunofluorescence and ELISA research applications.
Applications	WB/IHC/IF/ELISA
Host/Source	Rabbit
Reactivity	Human/Mouse/Rat

PRODUCT PROPERTIES

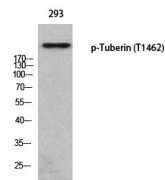
Clonality	Polyclonal
Clone ID	
Concentration	1 mg/mL
Conjugation	Unconjugated
Purification	The antibody was affinity-purified from rabbit antiserum by affinity-chromatography using epitope-specific immunogen.
Dilution Range	WB 1:500-2000 IHC 1:100-1:300 IF 1:200-1:1000 ELISA 1:5000
Formulation	Liquid in PBS containing 50% Glycerol, 0.5% BSA and 0.02% Sodium Azide.
Isotype	IgG
Storage Instruction	Store at -20°C for up to 1 year from the date of receipt, and avoid repeat freeze-thaw cycles.

TARGET INFORMATION

Gene ID	7249
Gene Symbol	TSC2
Uniprot ID	TSC2_HUMAN
Immunogen	The antiserum was produced against synthesized peptide derived from the human Tuberin/TSC2 around the phosphorylation site of Thr1462 at the amino acid range 1428-1477
Immunogen Region	1428-1477 aa
Specificity	Phospho-Tuberin (T1462) Polyclonal Antibody detects endogenous levels of Tuberin protein only when phosphorylated at T1462.
Immunogen Sequence	



Immunohistochemistry analysis of paraffin-embedded human breast carcinoma using Tuberin/TSC2 (Phospho-Thr1462) Antibody. The picture on the right is blocked with the phospho peptide.



Western blot analysis of 293 using p-Tuberin (T1462) antibody.

This product is suitable for in-vitro studies under the RESEARCH USE ONLY [RUO] licence. This product must not be used as for diagnostic or other medical purposes.
St John's Laboratory Ltd, Knowledge Dock Business Centre, University Way, London, E16 2RD | Tel: 0208 223 3081