

Anti-Phospho-EP300-Ser89 antibody (55-104 aa) (STJ91120)

STJ91120

GENERAL INFORMATION

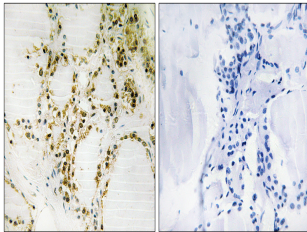
Product Type	Primary antibodies
Short Description	Rabbit polyclonal antibody anti-Phospho-Histone acetyltransferase p300-Ser89 (55-104 aa) is suitable for use in Immunohistochemistry, Immunofluorescence and ELISA research applications.
Applications	IHC/IF/ELISA
Host/Source	Rabbit
Reactivity	Human/Mouse/Rat

PRODUCT PROPERTIES

Clonality	Polyclonal
Clone ID	
Concentration	1 mg/mL
Conjugation	Unconjugated
Purification	The antibody was affinity-purified from rabbit antiserum by affinity-chromatography using epitope-specific immunogen.
Dilution Range	IHC 1:100-1:300 ELISA 1:5000 IF 1:50-200
Formulation	Liquid in PBS containing 50% Glycerol, 0.5% BSA and 0.02% Sodium Azide.
Isotype	IgG
Storage Instruction	Store at -20°C for up to 1 year from the date of receipt, and avoid repeat freeze-thaw cycles.

TARGET INFORMATION

Gene ID	2033
Gene Symbol	EP300
Uniprot ID	EP300_HUMAN
Immunogen	The antiserum was produced against synthesized peptide derived from the human p300 around the phosphorylation site of Ser89 at the amino acid range 55-104
Immunogen Region	55-104 aa
Specificity	Phospho-p300 (S89) Polyclonal Antibody detects endogenous levels of p300 protein only when phosphorylated at S89.
Immunogen Sequence	



Immunohistochemistry analysis of paraffin-embedded human thyroid gland, using p300 (Phospho-Ser89) Antibody. The picture on the right is blocked with the phospho peptide.