

Anti-Phospho-MEF2C-Ser387 antibody (353-402 aa) (STJ91116)

STJ91116

GENERAL INFORMATION

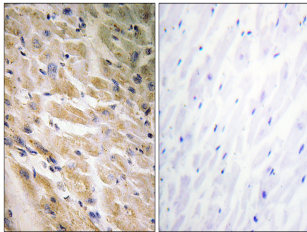
Product Type	Primary antibodies
Short Description	Rabbit polyclonal antibody anti-Phospho-Myocyte-specific enhancer factor 2C-Ser387 (353-402 aa) is suitable for use in Immunohistochemistry, Immunofluorescence and ELISA research applications.
Applications	IHC/IF/ELISA
Host/Source	Rabbit
Reactivity	Human/Mouse

PRODUCT PROPERTIES

Clonality	Polyclonal
Clone ID	
Concentration	1 mg/mL
Conjugation	Unconjugated
Purification	The antibody was affinity-purified from rabbit antiserum by affinity-chromatography using epitope-specific immunogen.
Dilution Range	IHC 1:100-1:300 ELISA 1:10000 IF 1:50-200
Formulation	Liquid in PBS containing 50% Glycerol, 0.5% BSA and 0.02% Sodium Azide.
Isotype	IgG
Storage Instruction	Store at -20°C for up to 1 year from the date of receipt, and avoid repeat freeze-thaw cycles.

TARGET INFORMATION

Gene ID	4208
Gene Symbol	MEF2C
Uniprot ID	MEF2C_HUMAN
Immunogen	The antiserum was produced against synthesized peptide derived from the human MEF2C around the phosphorylation site of Ser387 at the amino acid range 353-402
Immunogen Region	353-402 aa
Specificity	Phospho-MEF-2C (S387) Polyclonal Antibody detects endogenous levels of MEF-2C protein only when phosphorylated at S387.
Immunogen Sequence	



Immunohistochemistry analysis of paraffin-embedded human heart, using MEF2C (Phospho-Ser387) Antibody. The picture on the right is blocked with the phosphopeptide.