

Anti-Phospho-ADD1-Thr445 antibody (411-460 aa) (STJ91115)

STJ91115

GENERAL INFORMATION

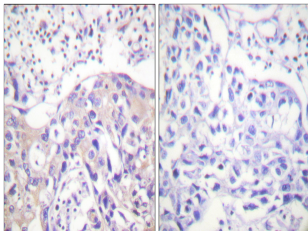
Product Type	Primary antibodies
Short Description	Rabbit polyclonal antibody anti-Phospho-Alpha-adducin-Thr445 (411-460 aa) is suitable for use in Immunohistochemistry, Immunofluorescence and ELISA research applications.
Applications	IHC/IF/ELISA
Host/Source	Rabbit
Reactivity	Human/Mouse/Rat

PRODUCT PROPERTIES

Clonality	Polyclonal
Clone ID	
Concentration	1 mg/mL
Conjugation	Unconjugated
Purification	The antibody was affinity-purified from rabbit antiserum by affinity-chromatography using epitope-specific immunogen.
Dilution Range	IHC 1:100-1:300 ELISA 1:5000 IF 1:50-200
Formulation	Liquid in PBS containing 50% Glycerol, 0.5% BSA and 0.02% Sodium Azide.
Isotype	IgG
Storage Instruction	Store at -20°C for up to 1 year from the date of receipt, and avoid repeat freeze-thaw cycles.

TARGET INFORMATION

Gene ID	118
Gene Symbol	ADD1
Uniprot ID	ADDA_HUMAN
Immunogen	The antiserum was produced against synthesized peptide derived from the human ADD1 around the phosphorylation site of Thr445 at the amino acid range 411-460
Immunogen Region	411-460 aa
Specificity	Phospho-Adducin Alpha (T445) Polyclonal Antibody detects endogenous levels of Adducin Alpha protein only when phosphorylated at T445.
Immunogen Sequence	



Immunohistochemistry analysis of paraffin-embedded human breast carcinoma, using ADD1 (Phospho-Thr445) Antibody. The picture on the right is blocked with the phospho peptide.