

Anti-Phospho-GATA1-Ser142 antibody (109-158 aa) (STJ91112)

STJ91112

GENERAL INFORMATION

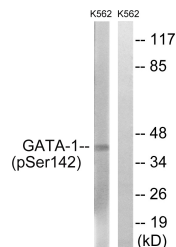
Product Type	Primary antibodies
Short Description	Rabbit polyclonal antibody anti-Phospho-Erythroid transcription factor-Ser142 (109-158 aa) is suitable for use in Western Blot, Immunohistochemistry, Immunofluorescence, Immunoprecipitation and ELISA research applications.
Applications	WB/IHC/IF/IP/ELISA
Host/Source	Rabbit
Reactivity	Human/Mouse/Rat

PRODUCT PROPERTIES

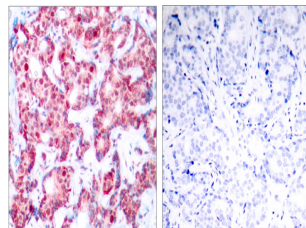
Clonality	Polyclonal
Clone ID	
Concentration	1 mg/mL
Conjugation	Unconjugated
Purification	The antibody was affinity-purified from rabbit antiserum by affinity-chromatography using epitope-specific immunogen.
Dilution	WB 1:500-1:2000
Range	IHC 1:100-1:300 IP 2-5 ug mg/lysate ELISA 1:5000 IF 1:50-200
Formulation	Liquid in PBS containing 50% Glycerol, 0.5% BSA and 0.02% Sodium Azide.
Isotype	IgG
Storage	Store at -20°C for up to 1 year from the date of receipt, and avoid repeat freeze-thaw cycles.
Instruction	

TARGET INFORMATION

Gene ID	2623
Gene Symbol	GATA1
Uniprot ID	GATA1_HUMAN
Immunogen	The antiserum was produced against synthesized peptide derived from the human GATA1 around the phosphorylation site of Ser142 at the amino acid range 109-158
Immunogen Region	109-158 aa
Specificity	Phospho-GATA-1 (S142) Polyclonal Antibody detects endogenous levels of GATA-1 protein only when phosphorylated at S142.
Immunogen Sequence	



Western blot analysis of lysates from K562 cells, using GATA1 (Phospho-Ser142) Antibody. The lane on the right is blocked with the phospho peptide.



Immunohistochemistry analysis of paraffin-embedded human breast carcinoma, using GATA1 (Phospho-Ser142) Antibody. The picture on the right is blocked with the phospho peptide.