

Anti-Phospho-IFNGR1-Tyr457 antibody (431-480 aa) (STJ91086)

STJ91086

GENERAL INFORMATION

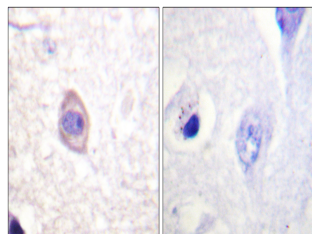
Product Type	Primary antibodies
Short Description	Rabbit polyclonal antibody anti-Phospho-Interferon gamma receptor 1-Tyr457 (431-480 aa) is suitable for use in Western Blot, Immunohistochemistry, Immunofluorescence and ELISA research applications.
Applications	WB/IHC/IF/ELISA
Host/Source	Rabbit
Reactivity	Human/Mouse/Rat/Monkey

PRODUCT PROPERTIES

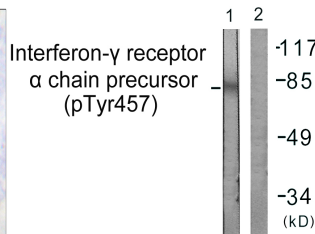
Clonality	Polyclonal
Clone ID	
Concentration	1 mg/mL
Conjugation	Unconjugated
Purification	The antibody was affinity-purified from rabbit antiserum by affinity-chromatography using epitope-specific immunogen.
Dilution Range	WB 1:500-1:2000 IHC 1:100-1:300 IF 1:200-1:1000 ELISA 1:20000
Formulation	Liquid in PBS containing 50% Glycerol, 0.5% BSA and 0.02% Sodium Azide.
Isotype	IgG
Storage Instruction	Store at -20°C for up to 1 year from the date of receipt, and avoid repeat freeze-thaw cycles.

TARGET INFORMATION

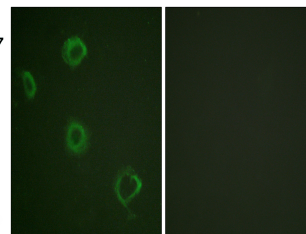
Gene ID	3459
Gene Symbol	IFNGR1
Uniprot ID	INGR1_HUMAN
Immunogen	The antiserum was produced against synthesized peptide derived from the human Interferon-gamma Receptor alpha around the phosphorylation site of Tyr457 at the amino acid range 431-480
Immunogen Region	431-480 aa
Specificity	Phospho-IFN-Gamma R Alpha (Y457) Polyclonal Antibody detects endogenous levels of IFN-Gamma R Alpha protein only when phosphorylated at Y457.
Immunogen Sequence	



Immunohistochemistry analysis of paraffin-embedded human brain, using Interferon-gamma Receptor alpha (Phospho-Tyr457) Antibody. The picture on the right is blocked with the phospho peptide.



Western blot analysis of lysates from COS7 cells, using Interferon-gamma Receptor alpha (Phospho-Tyr457) Antibody. The lane on the right is blocked with the phospho peptide.



Immunofluorescence analysis of A549 cells, using Interferon-gamma Receptor alpha (Phospho-Tyr457) Antibody. The picture on the right is blocked with the phospho peptide.