

Anti-Phospho-PLCG2-Tyr1217 antibody (1186-1235 aa) (STJ91048)

STJ91048

GENERAL INFORMATION

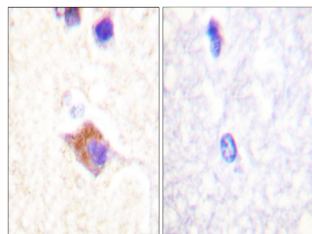
| | |
|--------------------------|--|
| Product Type | Primary antibodies |
| Short Description | Rabbit polyclonal antibody anti-Phospho-1-phosphatidylinositol 4, 5-bisphosphate phosphodiesterase gamma-2-Tyr1217 (1186-1235 aa) is suitable for use in Western Blot, Immunohistochemistry, Immunofluorescence and ELISA research applications. |
| Applications | WB/IHC/IF/ELISA |
| Host/Source | Rabbit |
| Reactivity | Human/Mouse/Rat |

PRODUCT PROPERTIES

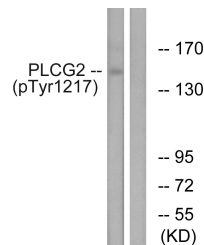
| | |
|----------------------------|---|
| Clonality | Polyclonal |
| Clone ID | |
| Concentration | 1 mg/mL |
| Conjugation | Unconjugated |
| Purification | The antibody was affinity-purified from rabbit antiserum by affinity-chromatography using epitope-specific immunogen. |
| Dilution | WB 1:500-1:2000 |
| Range | IHC 1:100-1:300 IF 1:200-1:1000 ELISA 1:5000 |
| Formulation | Liquid in PBS containing 50% Glycerol, 0.5% BSA and 0.02% Sodium Azide. |
| Isotype | IgG |
| Storage Instruction | Store at -20°C for up to 1 year from the date of receipt, and avoid repeat freeze-thaw cycles. |

TARGET INFORMATION

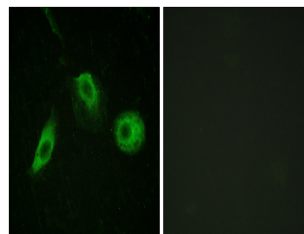
| | |
|---------------------------|--|
| Gene ID | 5336 |
| Gene Symbol | PLCG2 |
| Uniprot ID | PLCG2_HUMAN |
| Immunogen | The antiserum was produced against synthesized peptide derived from the human PLCG2 around the phosphorylation site of Tyr1217 at the amino acid range 1186-1235 |
| Immunogen Region | 1186-1235 aa |
| Specificity | Phospho-PLC Gamma 2 (Y1217) Polyclonal Antibody detects endogenous levels of PLC Gamma 2 protein only when phosphorylated at Y1217. |
| Immunogen Sequence | |



Immunohistochemistry analysis of paraffin-embedded human brain, using PLCG2 (Phospho-Tyr1217) Antibody. The picture on the right is blocked with the phospho peptide.



Western blot analysis of lysates from Jurkat cells treated with UV 157, using PLCG2 (Phospho-Tyr1217) Antibody. The lane on the right is blocked with the phospho peptide.



Immunofluorescence analysis of HeLa cells, using PLCG2 (Phospho-Tyr1217) Antibody. The picture on the right is blocked with the phospho peptide.