

## Anti-Phospho-RPS6KB1-Thr412 antibody (355-450 aa) (STJ91045)

STJ91045

### GENERAL INFORMATION

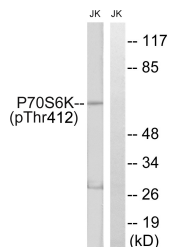
|                          |   |
|--------------------------|---|
| <b>Product Type</b>      | Primary antibodies  |
| <b>Short Description</b> | Rabbit polyclonal antibody anti-Phospho-Ribosomal protein S6 kinase beta-1-Thr412 (355-450 aa) is suitable for use in Western Blot, Immunohistochemistry, Immunofluorescence and ELISA research applications. |
| <b>Applications</b>      | WB/IHC/IF/ELISA   |
| <b>Host/Source</b>       | Rabbit  |
| <b>Reactivity</b>        | Human/Mouse/Rat   |

### PRODUCT PROPERTIES

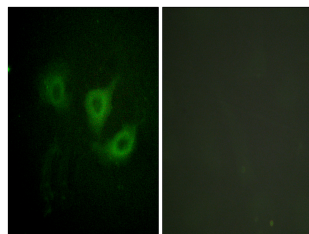
|                            |   |
|----------------------------|---|
| <b>Clonality</b>           | Polyclonal  |
| <b>Clone ID</b>            |   |
| <b>Concentration</b>       | 1 mg/mL   |
| <b>Conjugation</b>         | Unconjugated  |
| <b>Purification</b>        | The antibody was affinity-purified from rabbit antiserum by affinity-chromatography using epitope-specific immunogen. |
| <b>Dilution</b>            | WB 1:500-1:2000   |
| <b>Range</b>               | IHC 1:100-1:300<br>IF 1:200-1:1000<br>ELISA 1:10000   |
| <b>Formulation</b>         | Liquid in PBS containing 50% Glycerol, 0.5% BSA and 0.02% Sodium Azide.   |
| <b>Isotype</b>             | IgG   |
| <b>Storage Instruction</b> | Store at -20°C for up to 1 year from the date of receipt, and avoid repeat freeze-thaw cycles.                        |

### TARGET INFORMATION

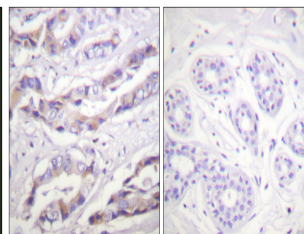
|                           |   |
|---------------------------|---|
| <b>Gene ID</b>            | 6198  |
| <b>Gene Symbol</b>        | RPS6KB1   |
| <b>Uniprot ID</b>         | KS6B1_HUMAN   |
| <b>Immunogen</b>          | The antiserum was produced against synthesized peptide derived from the human p70 S6 Kinase around the phosphorylation site of Thr412 at the amino acid range 355-450 |
| <b>Immunogen Region</b>   | 355-450 aa  |
| <b>Specificity</b>        | Phospho-p70 S6 kinase Alpha (T412) Polyclonal Antibody detects endogenous levels of p70 S6 kinase Alpha protein only when phosphorylated at T412.                     |
| <b>Immunogen Sequence</b> |   |



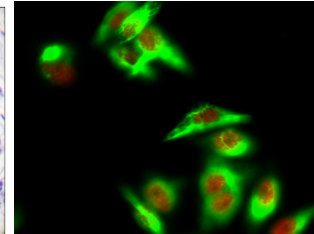
Western blot analysis of lysates from Jurkat cells treated with insulin (0.01U/ml) 15', using p70 S6 Kinase (Phospho-Thr389) Antibody. The lane on the right is blocked with the phospho peptide.



Immunofluorescence analysis of HUVEC cells, using p70 S6 Kinase (Phospho-Thr389) Antibody. The picture on the right is blocked with the phospho peptide.



Immunohistochemistry analysis of paraffin-embedded human breast carcinoma, using p70 S6 Kinase (Phospho-Thr389) Antibody. The picture on the right is blocked with the phospho peptide.



Immunofluorescence analysis of HeLa cell. 1. p70 S6 kinase Alpha (phospho Thr412) Polyclonal Antibody (red) was diluted at 1:200 (4A°C overnight). Active Caspase-3 monoclonal antibody (5E1) (green) was diluted at 1:200 (4A°C overnight). 2. Goat Anti Rabbit Alexa Fluor 594 Catalog: (NA) was diluted at 1:1000 (room temperature, 50min). Goat Anti Mouse Alexa Fluor 488 Catalog: (NA) was diluted at 1:1000 (room temperature, 50min).

This product is suitable for in-vitro studies under the RESEARCH USE ONLY [RUO] licence. This product must not be used as for diagnostic or other medical purposes.  
St John's Laboratory Ltd, Knowledge Dock Business Centre, University Way, London, E16 2RD | Tel: 0208 223 3081