

Anti-Phospho-ETS1-Thr38 antibody (11-60 aa) (STJ91038)

STJ91038

GENERAL INFORMATION

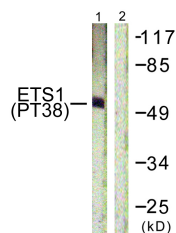
Product Type	Primary antibodies
Short Description	Rabbit polyclonal antibody anti-Phospho-Protein C-ets-1-Thr38 (11-60 aa) is suitable for use in Western Blot, Immunohistochemistry, Immunofluorescence and ELISA research applications.
Applications	WB/IHC/IF/ELISA
Host/Source	Rabbit
Reactivity	Human/Mouse/Rat

PRODUCT PROPERTIES

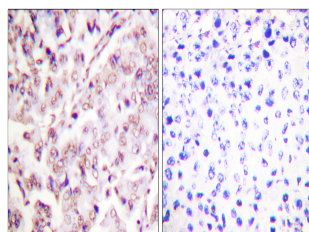
Clonality	Polyclonal
Clone ID	
Concentration	1 mg/mL
Conjugation	Unconjugated
Purification	The antibody was affinity-purified from rabbit antiserum by affinity-chromatography using epitope-specific immunogen.
Dilution Range	WB 1:500-1:2000 IHC 1:100-1:300 IF 1:200-1:1000 ELISA 1:10000
Formulation	Liquid in PBS containing 50% Glycerol, 0.5% BSA and 0.02% Sodium Azide.
Isotype	IgG
Storage Instruction	Store at -20°C for up to 1 year from the date of receipt, and avoid repeat freeze-thaw cycles.

TARGET INFORMATION

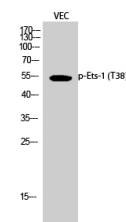
Gene ID	2113
Gene Symbol	ETS1
Uniprot ID	ETS1_HUMAN
Immunogen	The antiserum was produced against synthesized peptide derived from the human ETS1 around the phosphorylation site of Thr38 at the amino acid range 11-60
Immunogen Region	11-60 aa
Specificity	Phospho-Ets-1 (T38) Polyclonal Antibody detects endogenous levels of Ets-1 protein only when phosphorylated at T38.
Immunogen Sequence	



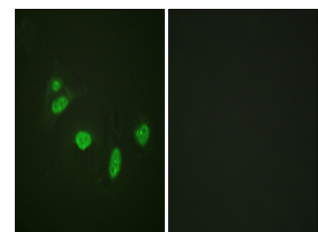
Western blot analysis of lysates from HeLa cells treated with Serum 20% 15', using ETS1 (Phospho-Thr38) Antibody. The lane on the right is blocked with the phospho peptide.



Immunohistochemistry analysis of paraffin-embedded human breast carcinoma, using ETS1 (Phospho-Thr38) Antibody. The picture on the right is blocked with the phospho peptide.



Western blot analysis of VEC cells using Phospho-Ets-1 (T38) Polyclonal Antibody cells nucleus extracted by Minute TM Cytoplasmic and Nuclear Fractionation kit (SC-003, Inventiotech, MN, USA).



Immunofluorescence analysis of HeLa cells, using ETS1 (Phospho-Thr38) Antibody. The picture on the right is blocked with the phospho peptide.

This product is suitable for in-vitro studies under the RESEARCH USE ONLY [RUO] licence. This product must not be used as for diagnostic or other medical purposes.
St John's Laboratory Ltd, Knowledge Dock Business Centre, University Way, London, E16 2RD | Tel: 0208 223 3081