

Anti-Phospho-CALD1-Ser789 antibody (744-793 aa) (STJ91034)

STJ91034

GENERAL INFORMATION

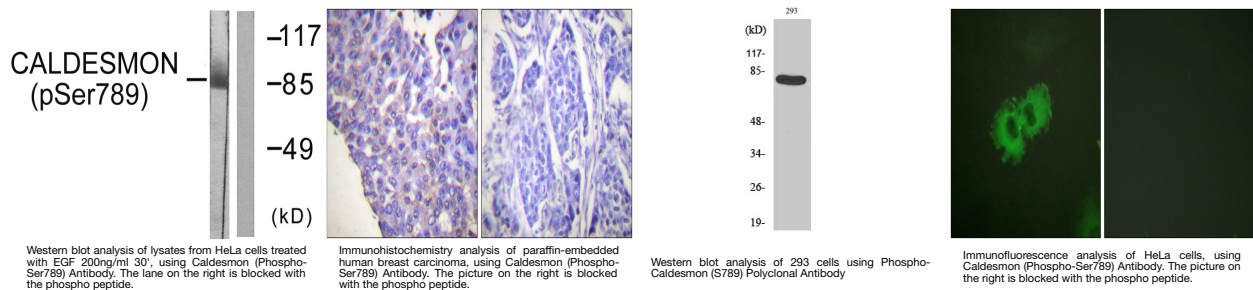
Product Type	Primary antibodies
Short Description	Rabbit polyclonal antibody anti-Phospho-Caldesmon-Ser789 (744-793 aa) is suitable for use in Western Blot, Immunohistochemistry, Immunofluorescence and ELISA research applications.
Applications	WB/IHC/IF/ELISA
Host/Source	Rabbit
Reactivity	Human/Mouse/Rat

PRODUCT PROPERTIES

Clonality	Polyclonal
Clone ID	
Concentration	1 mg/mL
Conjugation	Unconjugated
Purification	The antibody was affinity-purified from rabbit antiserum by affinity-chromatography using epitope-specific immunogen.
Dilution Range	WB 1:500-1:2000 IHC 1:100-1:300 IF 1:200-1:1000 ELISA 1:5000
Formulation	Liquid in PBS containing 50% Glycerol, 0.5% BSA and 0.02% Sodium Azide.
Isotype	IgG
Storage Instruction	Store at -20°C for up to 1 year from the date of receipt, and avoid repeat freeze-thaw cycles.

TARGET INFORMATION

Gene ID	800
Gene Symbol	CALD1
Uniprot ID	CALD1_HUMAN
Immunogen	The antiserum was produced against synthesized peptide derived from the human Caldesmon around the phosphorylation site of Ser789 at the amino acid range 744-793
Immunogen Region	744-793 aa
Specificity	Phospho-Caldesmon (S789) Polyclonal Antibody detects endogenous levels of Caldesmon protein only when phosphorylated at S789.
Immunogen Sequence	



This product is suitable for in-vitro studies under the RESEARCH USE ONLY [RUO] licence. This product must not be used as for diagnostic or other medical purposes.
St John's Laboratory Ltd, Knowledge Dock Business Centre, University Way, London, E16 2RD | Tel: 0208 223 3081