

Anti-Phospho-GRIA1-Ser863 antibody (829-878 aa) (STJ91008)

STJ91008

GENERAL INFORMATION

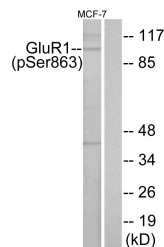
Product Type	Primary antibodies
Short Description	Rabbit polyclonal antibody anti-Phospho-Glutamate receptor 1-Ser863 (829-878 aa) is suitable for use in Western Blot, Immunohistochemistry, Immunofluorescence and ELISA research applications.
Applications	WB/IHC/IF/ELISA
Host/Source	Rabbit
Reactivity	Human/Mouse/Rat

PRODUCT PROPERTIES

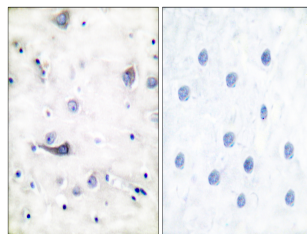
Clonality	Polyclonal
Clone ID	
Concentration	1 mg/mL
Conjugation	Unconjugated
Purification	The antibody was affinity-purified from rabbit antiserum by affinity-chromatography using epitope-specific immunogen.
Dilution	WB 1:500-1:2000
Range	IHC 1:100-1:300 ELISA 1:40000 IF 1:50-200
Formulation	Liquid in PBS containing 50% Glycerol, 0.5% BSA and 0.02% Sodium Azide.
Isotype	IgG
Storage Instruction	Store at -20°C for up to 1 year from the date of receipt, and avoid repeat freeze-thaw cycles.

TARGET INFORMATION

Gene ID	2890
Gene Symbol	GRIA1
Uniprot ID	GRIA1_HUMAN
Immunogen	The antiserum was produced against synthesized peptide derived from the human GluR1 around the phosphorylation site of Ser863 at the amino acid range 829-878
Immunogen Region	829-878 aa
Specificity	Phospho-GluR-1 (S863) Polyclonal Antibody detects endogenous levels of GluR-1 protein only when phosphorylated at S863.
Immunogen Sequence	



Western blot analysis of lysates from MCF-7 cells, using GluR1 (Phospho-Ser863) Antibody. The lane on the right is blocked with the phospho peptide.



Immunohistochemistry analysis of paraffin-embedded human brain, using GluR1 (Phospho-Ser863) Antibody. The picture on the right is blocked with the phospho peptide.

This product is suitable for in-vitro studies under the RESEARCH USE ONLY [RUO] licence. This product must not be used as for diagnostic or other medical purposes.
St John's Laboratory Ltd, Knowledge Dock Business Centre, University Way, London, E16 2RD | Tel: 0208 223 3081