

Anti-Phospho-TOP2A-Ser1525 antibody (1482-1531 aa) (STJ90996)

STJ90996

GENERAL INFORMATION

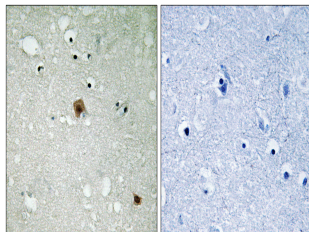
Product Type	Primary antibodies
Short Description	Rabbit polyclonal antibody anti-Phospho-DNA topoisomerase 2-alpha-Ser1525 (1482-1531 aa) is suitable for use in Western Blot, Immunohistochemistry, Immunofluorescence and ELISA research applications.
Applications	WB/IHC/IF/ELISA
Host/Source	Rabbit
Reactivity	Human/Mouse/Rat

PRODUCT PROPERTIES

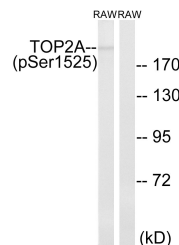
Clonality	Polyclonal
Clone ID	
Concentration	1 mg/mL
Conjugation	Unconjugated
Purification	The antibody was affinity-purified from rabbit antiserum by affinity-chromatography using epitope-specific immunogen.
Dilution	WB 1:500-1:2000
Range	IHC 1:100-1:300 ELISA 1:5000 IF 1:50-200
Formulation	Liquid in PBS containing 50% Glycerol, 0.5% BSA and 0.02% Sodium Azide.
Isotype	IgG
Storage Instruction	Store at -20°C for up to 1 year from the date of receipt, and avoid repeat freeze-thaw cycles.

TARGET INFORMATION

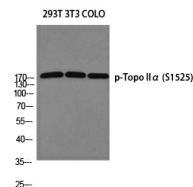
Gene ID	7153
Gene Symbol	TOP2A
Uniprot ID	TOP2A_HUMAN
Immunogen	The antiserum was produced against synthesized peptide derived from the human TOP2A around the phosphorylation site of Ser1525 at the amino acid range 1482-1531
Immunogen Region	1482-1531 aa
Specificity	Phospho-Topo II Alpha (S1525) Polyclonal Antibody detects endogenous levels of Topo II Alpha protein only when phosphorylated at S1525.
Immunogen Sequence	



Immunohistochemistry analysis of paraffin-embedded human brain tissue using TOP2A (Phospho-Ser1525) Antibody. The picture on the right is blocked with the phospho peptide.



Western blot analysis of lysates from RAW264.7 cells treated with TNF 20ng/ml 5', using TOP2A (Phospho-Ser1525) Antibody. The lane on the right is blocked with the phospho peptide.



Western blot analysis of 293T 3T3 COLO cells using p-Topo II Alpha (S1525) antibody. Antibody was diluted at 1:1000